

2023 GMC

CANYON



GMC

NAVIGATION GUIDE

3

CLICK THE HOME BUTTON TO
RETURN TO THE TABLE OF CONTENTS.



1



ROTATE FOR A BETTER VIEWING EXPERIENCE.

— USB Ports¹



2

CLICK ON UNDERLINED TEXT TO REVEAL
IMPORTANT LEGAL INFORMATION.

4

CLICK THE X TO CLOSE DISCLOSURES.



¹Not compatible with all devices.



CANYON CONTENTS

CLICK ANY TITLE TO EXPLORE A SPECIFIC CHAPTER.

3 INTRODUCTION

6 HIGH-TECH CABIN

9 OFF-ROAD-OPTIMIZED
2.7L ENGINE

10 CAPABILITY

14 TIRE INFLATE/DEFLATE

15 EXTERIOR
HIGHLIGHTS

17 AT4

24 AT4X

31 DENALI

36 ELEVATION

43 CAMERA VIEWS

44 PROGRADE™
TRAILERING

45 GMC CANYON
PRO SAFETY

46 BED AND TAILGATE

49 CONNECTIVITY

54 EXTERIOR COLORS

55 INTERIOR COLORS
AND TEXTURES

56 WHEELS

57 ACCESSORIES

61 IMPORTANT WORDS
AND LEGAL DISCLOSURES

MEET THE NEXT GENERATION CANYON

The All-New Canyon is the next generation of midsize truck, with adventure-ready, off-road capability designed and engineered to discover what's out there.

Preproduction models shown throughout. Actual production models may vary.





THE JOURNEY IS THE DESTINATION

The Next Generation GMC Canyon is here, ready to push past the limitations of the road. Explore beyond the boundaries in Canyon AT4, the First Ever Canyon AT4X or the powerfully premium New Canyon Denali.



ELEVATION



AT4X



DENALI



AT4



MEET THE 2023 GMC CANYON



Take seriously advanced off-road capability to the next level in the First Ever **Canyon AT4X**.



Go further in the incredibly capable and uncompromisingly luxurious **Canyon Denali**.



Get in on the action with serious off-road capability and advanced tech in **Canyon AT4**.



Stand out with confidence in the premium and capable **Canyon Elevation**.



COMMAND AND CONTROL

Embark on your adventures in Canyon's high-tech cabin, specifically redesigned to help you stay confidently in control wherever the action takes you.

Denali interior shown.



STAY ON TOP OF THE ACTION



Canyon offers first-in-class waterproof front and rear underbody cameras to give you a high-def look at the rocks, stumps and other obstacles you're powering over, helping to keep you aware and prepared for what might happen next.

AVAILABLE UNDERBODY CAMERAS OFFER:

- Front and Rear Camera Views With Waterproof Underbody Cameras That Deliver Real-Time Forward- and Rear-Facing Views of the Trail Below
- Split-Screen View That Shows Both Underbody Cameras and High Definition Surround Vision Views Together
- Camera Wash System

Safety or driver-assistance features are no substitute for the driver's responsibility to operate the vehicle in a safe manner. The driver should remain attentive to traffic, surroundings and road conditions at all times. Visibility, weather and road conditions may affect feature performance. Read the vehicle Owner's Manual for more important feature limitations and information.

BIG-SCREEN ADVENTURE

Canyon’s array of massive, customizable, driver-focused screens helps you stay in control of the action.

DRIVER-FOCUSED SCREENS INCLUDE:

- Standard 11.3" Diagonal Center Touch-Screen
- Available 11" Diagonal Driver Information Center
- Available First-in-Class 6.3" Diagonal Head-Up Display



Available features shown.





HIGH-TORQUE, OFF-ROAD-OPTIMIZED 2.7L ENGINE

- Best-in-Class Standard Gas Engine Torque¹
- 430 lb-ft of Torque
- 310 hp
- Available Max Towing Capacity² of 7,700 lbs





RISE TO THE CHALLENGE OF THE TRAIL



Canyon's available off-road hardware is purpose-built to help you overcome the challenges of the trail.

- Skid Plate Protection Is Available

- 9.6" of Standard Ground Clearance With up to 10.7" of Ground Clearance on AT4X
- Front and Rear E-Locking Differentials, Which Assure Both Wheels Will Spin Together Regardless of the Amount of Resistance to Keep Traction, Are Available

- Multimatic™ DSSV Dampers, Featuring Three Separate Spool Valves to Control Damping and Three Connected Chambers for Fluid Flow, Are Available



READY FOR REAL OFF-ROAD ACTION

Canyon's high, aggressive and wide stance is ready to tackle tough terrain.

FACTORY LIFT

- 2" on Elevation, AT4 and Denali
- 3" on AT4X

ULTRA-WIDE FRONT AND REAR TRACK WIDTH

- 66.1" on Elevation and AT4
- 66" front and 65.9" rear on Denali
- 66.3" on AT4X

GROUND CLEARANCE

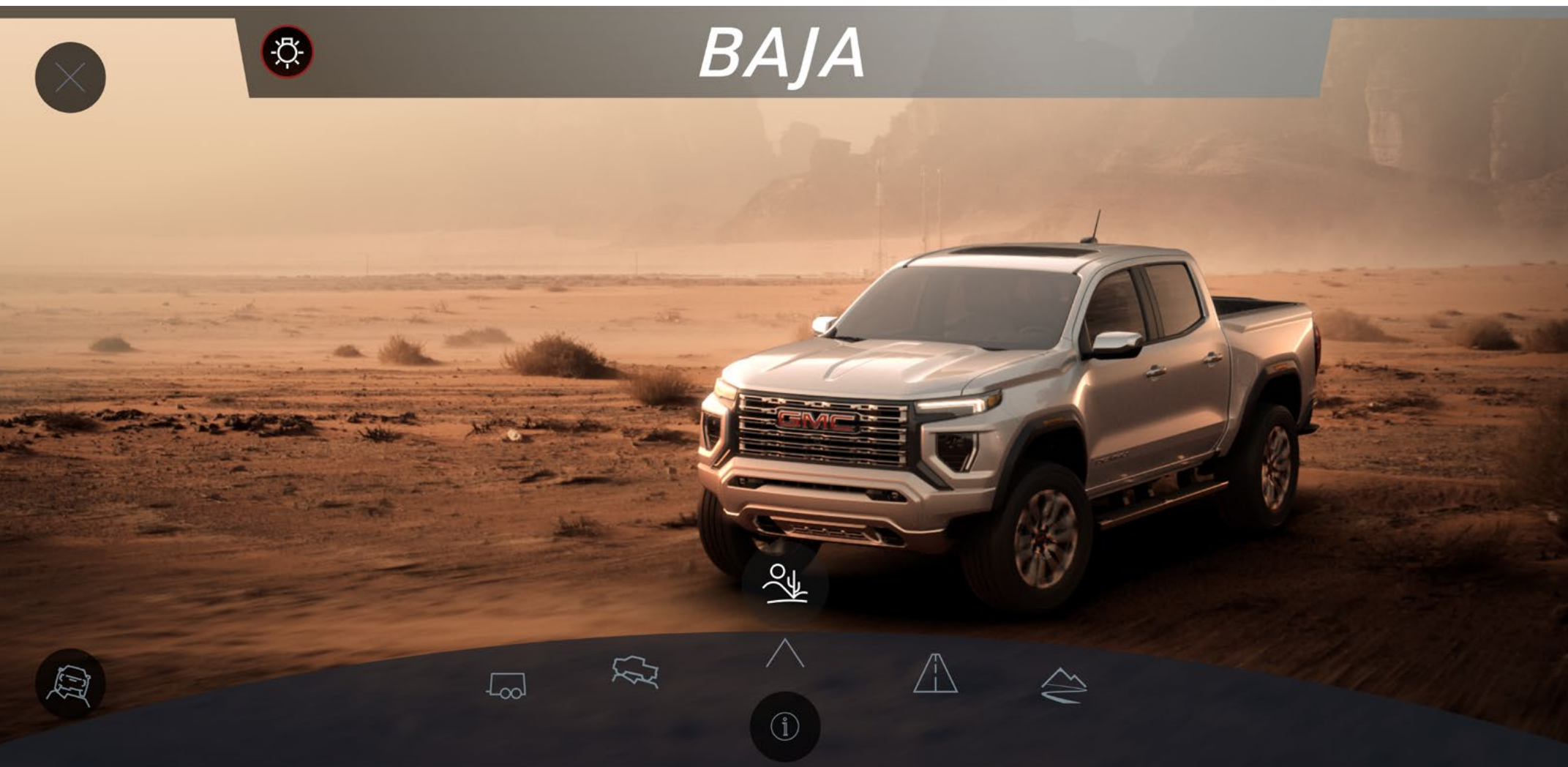
- 9.6" on Elevation and AT4
- 10.5" on Denali
- 10.7" on AT4X





CONQUER THE TRAILS

Track real-time, off-road performance data on the center screen with Canyon's new standard Off-Road Performance Display.



AVAILABLE SELECTABLE MODES:

BAJA MODE

- For High-Speed Off-Road, This Mode Adjusts the Steering, Throttle, Transmission Shift Points, Antilock Braking, Traction Control System Performance and More in Order to Maximize Response at Higher Speeds (AT4X-Exclusive)

TERRAIN MODE

- For Low-Speed Off-Road Conditions, Provides Extreme Control and Is Precision-Enabled for One-Pedal¹ Rock Crawling, Using Only the Accelerator

OFF-ROAD MODE

- For General Off-Road, Provides Additional Traction and Dynamic Performance While Off Pavement

NORMAL MODE

- Balanced Mode for Everyday Driving

TOW/HAUL MODE

- Optimized for Towing and Hauling



THE END OF THE ROAD IS ONLY THE BEGINNING

Get the optimal traction you need to take on mud and loose surfaces with Canyon's available off-road inflate/deflate capability.

- Accessible Through the Center Touch-Screen
- Allows Drivers to Set Target Tire Pressure for Each Tire¹
- Driver Must Remove the Valve Cap, Then Press and Hold the Tire Valve Stem²
- Visual and Audible Alerts Outside of the Vehicle Will Alert the Driver When Target Pressure Is Achieved in Each Tire¹





Air Down Mode Active

- Exit vehicle and manually deflate tires one by one
- The horn will honk when each tire reaches the set target pressure
- Tap Exit Mode only when all 4 tires are at the target pressure

Exit Mode



Target Pressure: 15PSI



HIGH-CLEARANCE FRONT FASCIA

- Features Trimmed-Out Corners for Overcoming Obstacles

OPTIMIZED APPROACH AND BREAKOVER ANGLES

- Take on the Challenges of the Trail With Canyon's Optimized Approach and Breakover Angles. AT4X Features a 36.9-Degree Approach Angle, 25.0-Degree Departure Angle and 24.5-Degree Breakover Angle.

LED EXTERIOR LIGHTING

- Canyon Features LED Projector Headlamps, Daytime Running Lamps and Available Fog Lamps



STAY ON THE LEVEL

- Redesigned Body Lines and Trim

AGGRESSIVE AND ATHLETIC STANCE

- Front Axle Moved Forward for a More Planted, Leveled Stance

ROOM TO SPARE

- Canyon's Spare Tire Is Tucked High for Enhanced Ground Clearance

SUNROOF

- Let the Sun Shine in With the Available Sunroof



CANYON AT4: PIONEER OF OFF-ROAD ACTION

Canyon AT4 is the next generation of overland-ready adventure trucks. Incredibly capable and seriously advanced, it's purpose-built to thrive under off-road adversity and tame the untamed.





AUTOMATIC-LOCKING REAR DIFFERENTIAL

- Improves Traction on Loose Gravel or Slippery Surfaces by Locking Both Rear Wheels to Deliver Power Where You Need It

4WD SYSTEM

- 4-Wheel Drive With 2-Speed AutoTrac Transfer Case

DRIVE MODE SELECTOR

- Tailors Performance to Specific Off-Road Conditions



READY FOR ACTION

- Standard 2" Factory Lift
- Standard 66.1" Front and Rear Ultra-Wide Track Width
- Standard 9.6" of Ground Clearance





RUGGED GOOD LOOKS

Aggressive styling stands
out on the trails.





EXTERIOR FEATURES INCLUDE:

- LED Fog Lamps
- Red Recovery Hooks¹
- Unique AT4 Grille and Badging



GET IN ON THE AT4 ACTION

Inside AT4, you'll find an athletic interior featuring Jet Black cloth and CoreTec seating with Timber accents or available perforated leather-appointed front seats.



INTERIOR FEATURES INCLUDE:

- Exclusive Jet Black Interior With Timber Accents
- Available Leather-Appointed Front Seats
- Heated Front Seats
- 8-Way Power Driver Seat With Power Lumbar
- Dual-Zone Automatic Climate Control
- Available Bose® Premium Audio



THE FIRST EVER CANYON AT4X: THE MOST ADVANCED OFF-ROAD MIDSIZE TRUCK¹





THE APEX OF OFF-ROAD ACTION

With advanced adventure-ready tech and serious off-road hardware, it's setting a new standard for trail-optimized capability and rugged, ultra-premium style.



STAY IN THE ACTION

FRONT AT4X ALUMINUM SKID PLATE

Help protect vital underbody components from rocks, stumps and other obstacles with a rugged skid plate.





ADVENTURE-READY

MULTIMATIC DSSV DAMPERS

AT4X-exclusive Multimatic DSSV dampers feature three separate spool valves to control damping and three connected chambers for fluid flow.



EQUIPPED FOR THE OFF ROAD

SELECTABLE FRONT AND REAR E-LOCKING DIFFERENTIALS

Tackle tough terrain with driver-selectable front and rear e-locking differentials, which assure both wheels will spin together regardless of the amount of resistance to keep traction in the rough backcountry.





BOLD AND STRIKING INTERIOR

The First Ever Canyon AT4X interior is inspired by extreme adventure sport gear and features a luxurious Obsidian Rush interior.

THE LOOK OF DETERMINATION



AT4X has the looks to match its amazing capability.

- Exclusive Obsidian Rush Interior
- All-Weather AT4X Floor Liners
- Stitched AT4X Logo on Front Seats
- Available Red Seat Belts





UNCOMPROMISINGLY PREMIUM

Canyon Denali features signature styling and powerful capability.





BOLD AND DISTINCTIVE

From a night out on the town to a day pushing deep into the backcountry, Canyon Denali's distinctive styling proudly stands apart.



EXTERIOR FEATURES INCLUDE:

- 5" Chrome Assist Steps
- Sculpted Chrome Grille With Chrome Exterior Accents
- 20" Exclusive Diamond-Cut Dark Gray Aluminum Wheels
- Spray-on Bedliner With Denali Logo
- Denali-Exclusive Badging
- 22" Accessory Wheels¹ Are Available



EXCLUSIVE INTERIOR

Travel beyond the boundaries in first-class style and comfort in Canyon Denali's exclusive premium interior in Jet Black with Teak accents.



ADVENTURE, DENALI-STYLE



- Exclusive Premium Jet Black Interior With Teak Accents
- Laser-Etched Authentic Wood Trim
- Perforated Leather-Appointed Seats

- Heated and Ventilated Front Seats
- Heated Steering Wheel

- 8-Way Power Driver Seat With Power Lumbar
- 6-Way Power Front-Passenger Seat With Power Lumbar



RISE ABOVE

Elevation is ready to thrive
wherever the action leads.





CAPABILITY COMES STANDARD

Tackle tough terrain with a standard off-road suspension.





HIGH AND WIDE

Thrive under off-road adversity with a 66.1" ultra-wide front and rear track width and 9.6" of standard ground clearance.





STAND OUT

Canyon Elevation faces the world with an athletic demeanor and aggressive stance.



LOOK THE PART

- 18" Wheels With All-Terrain Tires
- LED Headlamps and Available Fog Lamps
- Remote Locking/Unlocking Tailgate
- Eight Standard Tie-Downs in Cargo Bed
- CornerStep Rear Bumper





RUGGED AND READY

Canyon Elevation features a rugged and refined interior with exclusive Jet Black cloth or available CoreTec seating.

GET AFTER IT

- Push-Button Start
- Soft-Touch Instrument Panel Materials
- Rear Console Vents
- Available CoreTec Seating (Shown at Right)
- Available Dual-Zone Automatic Climate Control
- Available Heated Front Seats
- Available Sunroof





UP TO
10 AVAILABLE
CAMERA
VIEWS

1.

FRONT CAMERA VIEW
2.

REAR CAMERA VIEW
3.

SURROUND VIEW
4.

FRONT SIDE VIEW
5.

REAR SIDE VIEW
6.

FRONT TOP-DOWN VIEW
7.

REAR TOP-DOWN VIEW
8.

HITCH VIEW
9.

FRONT UNDERBODY VIEW
10.

REAR UNDERBODY VIEW

Canyon offers up to 10 available camera views including first-in-class front and rear underbody cameras to help provide more views around and under your truck.

GUIDANCE LINES When selected, guidance lines show the current and intended vehicle path, and are available in Front/Rear Camera Views, Front/Rear Top-Down Views and Surround View.

HITCH GUIDANCE When Hitch Guidance is selected, a single centered guidance line will display within the Rear Camera View on the infotainment display. To assist with aligning the vehicle’s hitch with a trailer coupler, align the Hitch Guidance line with the trailer coupler by continuously steering the vehicle to keep the guidance line centered. Park Assist overlays will not display when the Hitch Guidance line is active.

Safety or driver-assistance features are no substitute for the driver’s responsibility to operate the vehicle in a safe manner. The driver should remain attentive to traffic, surroundings and road conditions at all times. Visibility, weather and road conditions may affect feature performance. Read the vehicle Owner’s Manual for more important feature limitations and information.





TOWING TECH

Canyon's available in-vehicle Trailing App¹ helps you tow your camper, ATVs and the gear you need with ease and confidence.

AVAILABLE IN-VEHICLE TRAILERING APP¹ FUNCTIONALITY INCLUDES:

- Trailer Detection and Custom Profiles
- Trailer Light Sequence Test and Diagnostics
- Predeparture Checklist
- Trailer Theft Detection²



GO FORTH WITH CONFIDENCE

GMC CANYON PRO SAFETY¹ IS STANDARD ON EVERY CANYON AND INCLUDES:

- Automatic Emergency Braking
- Front Pedestrian and Bicyclist Braking
- IntelliBeam—Auto High Beams
- Following Distance Indicator (Late Availability²)
- Lane Keep Assist With Lane Departure Warning
- Forward Collision Alert



HAUL THE GEAR YOU DEPEND ON

Canyon's cargo bed gives you the functionality you need to haul your gear and provisions to base camp or wherever the action takes you.



Available spray-on bedliner shown.



Available features shown on this spread.

MULTISTOW™ TAILGATE

- Available MultiStow Tailgate With Included Drain to Help Carry Needed Provisions

120V OUTLET

- Canyon's Cargo Bed Offers an Available 120V Outlet for Your Off-Road Power Needs

EIGHT STANDARD TIE-DOWNS

- Keep Your Gear Securely Stowed With Eight Standard Tie-Down Points



Available features shown on this spread.

HALF-GATE POSITION

- Canyon's Tailgate Features a Half-Gate Position for Transporting Long Objects

AVAILABLE EZ-LIFT AND LOWER TAILGATE

- Reduces the Effort to Raise and Lower the Tailgate and Helps Provide a Controlled and More Gradual Lowering Motion When Opening It



KEEP YOUR CONNECTIONS STRONG

Three years of the OnStar® and Connected Services Premium Plan¹ are included on all 2023 Canyon models. With this plan, you can enjoy the added peace of mind of the OnStar Safety & Security Plan² and the complete suite of available connectivity features included in the Connected Vehicle Plan.³

ONSTAR AND CONNECTED SERVICES PREMIUM PLAN INCLUDES:

- In-Vehicle App⁴ Access
- In-Vehicle Wi-Fi® Hotspot Data⁵
- OnStar Guardian™ app⁶
- myGMC Mobile App⁷
- Automatic Crash Response⁸
- Emergency Services
- Crisis Assist
- Roadside Assistance⁹
- Stolen Vehicle Assistance¹⁰
- Alexa Built-in¹¹

STAY IN COMMAND WHEREVER THE ACTION LEADS

- Wireless Apple CarPlay® [Compatibility](#)¹
- Wireless Android Auto™ [Compatibility](#)²
- Wireless [Charging](#)³ Is Available





GET THERE WITH GOOGLE BUILT-IN

With available Google built-in¹ compatibility and a 3-year GMC Connected Vehicle subscription included on all Canyon trims, you will receive a helpful, personalized and seamless way to enhance your in-vehicle experience. With Google Assistant, Google Maps and more on Google Play, you get access to hands-free help, live traffic updates, some of your favorite apps and more.



EXPLORE MORE, ALEXA'S ON BOARD

Alexa functionality is fully integrated into your GMC Infotainment System.¹ With 3 years of standard Amazon Alexa Built-in,² you can ask Alexa to stream your favorite music services such as Spotify^{®3} or Amazon Music, get directions, make calls, change your radio station and get routes to the nearest dealership—on the go. Alexa can also make shopping lists, play and resume audiobooks and get the score to last night's game.



HELP WHEN YOU NEED IT

With 3 years of OnStar Safety and Security, you'll have added peace of mind knowing an Emergency Advisor¹ is ready to help. Whether it's a crash, a vehicle theft or an emergency situation, help is available 24/7.

The Safety & Security Plan² includes the OnStar Guardian app,³ which lets you access the key OnStar safety services you depend on right from your phone. Help in a crash, assistance with a flat tire and more are available through your smartphone. Best of all, you can share OnStar Guardian with up to seven of your loved ones at no additional cost.

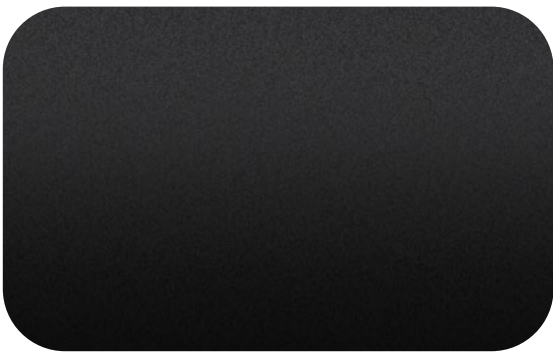




FIND YOUR TRUE COLORS



SUMMIT
WHITE



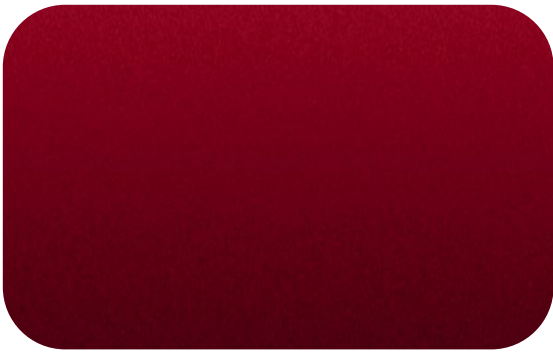
ONYX
BLACK¹



SOLAR FLARE
METALLIC^{1, 2}



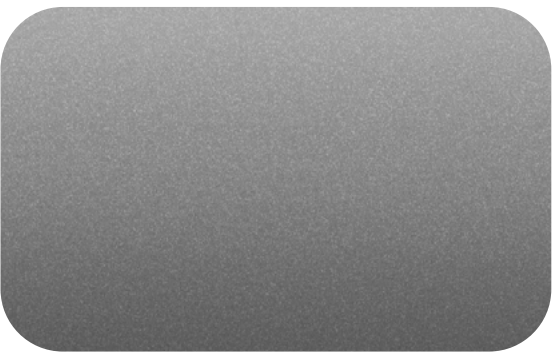
DESERT SAND
METALLIC^{1, 2}



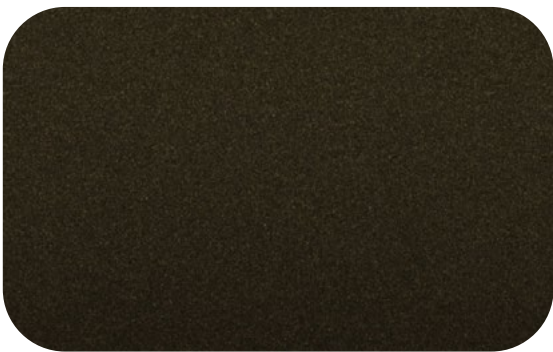
VOLCANIC RED
TINTCOAT¹



DYNAMIC BLUE
METALLIC^{1, 2}



STERLING
METALLIC¹

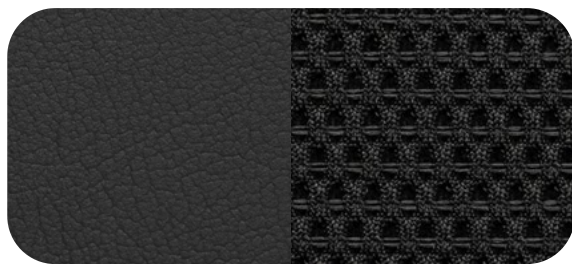


DEEP BRONZE
METALLIC¹

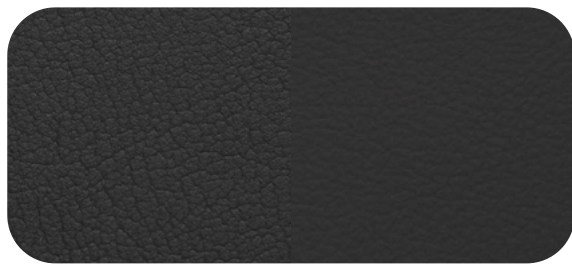




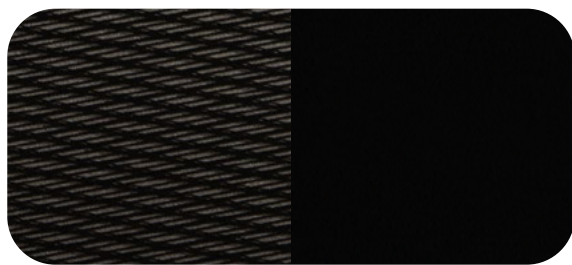
ELEVATION



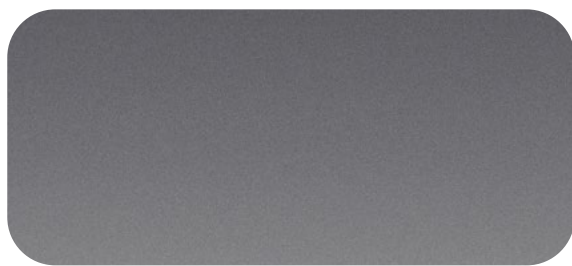
JET BLACK/
JET BLACK CLOTH



JET BLACK/JET BLACK CORETEC

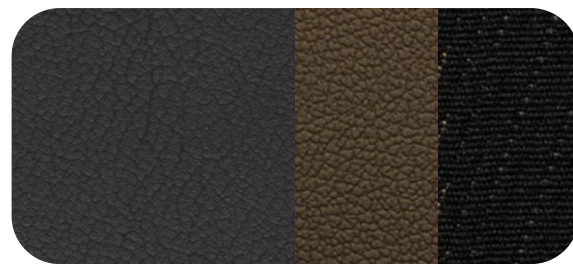


BRIGADE AND PIANO BLACK ACCENTS

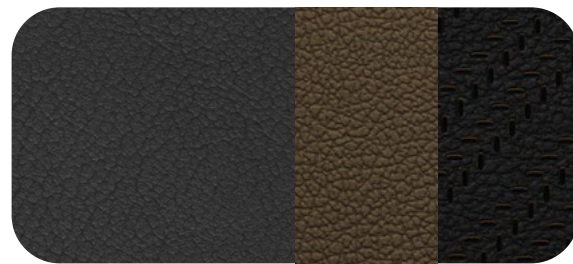


GALVANO CHROME

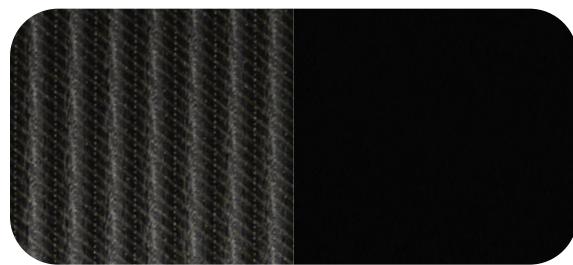
AT4



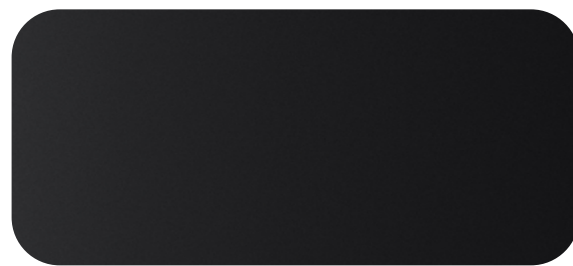
JET BLACK/JET BLACK CLOTH AND CORETEC
WITH TIMBER ACCENTS



JET BLACK/JET BLACK FRONT
LEATHER-APPOINTED WITH
TIMBER ACCENTS

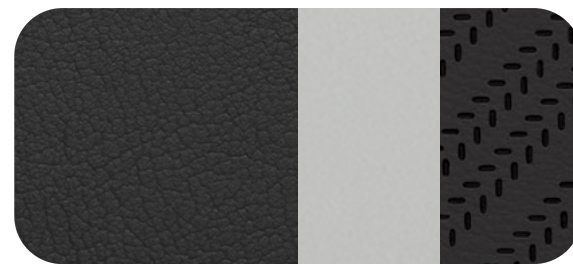


STRIDER AND PIANO BLACK ACCENTS

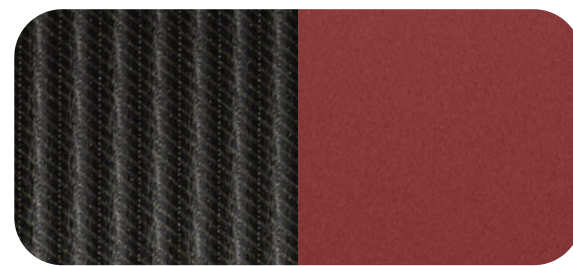


NIGHTRIDER CHROME

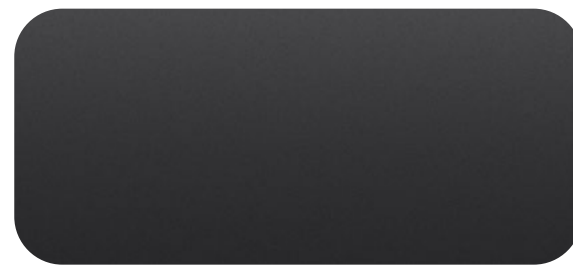
AT4X



OBSIDIAN RUSH PERFORATED
FRONT LEATHER-APPOINTED WITH
CERAMIC WHITE ACCENTS

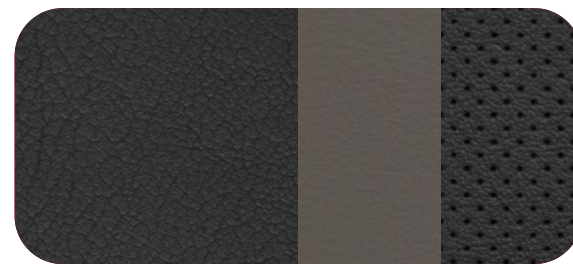


STRIDER AND RIVALRY RED
METALLIC ACCENTS



NIGHTRIDER CHROME

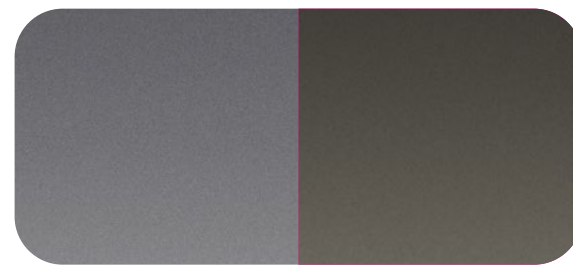
DENALI



JET BLACK/JET BLACK
PERFORATED LEATHER-APPOINTED
WITH TEAK ACCENTS



WALNUT WOOD



GALVANO AND AURON CHROME



PRECISION-CRAFTED FROM THE GROUND UP



17"

17" Black
High-Gloss Machined
Aluminum (R34)
Standard on AT4X



18"

18" Dark Gray Painted
Aluminum (RQ8)
Standard on Elevation



18"

18" Dark Gray Machined
Aluminum (RQL)
Standard on AT4



20"

20" Full-Gloss Dark
Gray Machined
Aluminum (RD5)
Available on AT4



20"

20" Diamond-Cut Dark
Gray Aluminum (RD4)
Standard on Denali



CUSTOM-EQUIP YOUR CANYON

GMC Accessories are a great way to personalize your Canyon—inside and out. They're designed and engineered to meet the Professional Grade standards of your Canyon, as well as your own. We also offer accessories from a lineup of other renowned and proven manufacturers.

Find a full selection of Canyon accessories at gmc.com/accessories.



OFF-ROAD ASSIST STEPS



FRONT FLAT SPLASH GUARDS



SPORT ROLL SOFT ROLL-UP TONNEAU COVER



LED PERIMETER BED LIGHTING



Find a full selection of Canyon accessories at gmc.com/accessories.



POWERED BY PROFESSIONAL GRADE



SIERRA 1500

CANYON

SIERRA HEAVY DUTY

HUMMER EV PICKUP

YUKON

TERRAIN

ACADIA

Due to current supply-chain shortages, certain features shown have limited or late availability, or are no longer available. See the window label or a dealer regarding the features on an individual vehicle. Sierra 1500 AT4X shown with available accessories. Reservations for HUMMER EV are currently full.

DRIVE THE CONVERSATION

#GMCCANYON | #DENALI | #AT4



Share your GMC experience and get in on the action.





GMC

@GMC

Meet the Next Generation [#GMCCanyon](#)—the Official Vehicle Of Nowhere.

[gmc.com/future-vehicle...](#)



Preproduction model shown. Actual production model may vary. Canyon initial availability early 2023. AT4X model available spring 2023. AT4X Edition 1 Package shown is extremely limited availability. The Safari Bar and Front Grille Light Bar may block the front-view camera or limit the camera's field of view, which will inhibit the HD Surround Vision system. Always check around the vehicle before driving or parking.



IMPORTANT WORDS AND LEGAL DISCLOSURES



NEW VEHICLE LIMITED WARRANTY

3-YEAR/36,000-MILE BUMPER-TO-BUMPER LIMITED WARRANTY GMC will warrant each 2023 Canyon from bumper to bumper for 3 years/36,000 miles (whichever comes first; see dealer for details), with no deductible, from the original in-service date of the vehicle, for warrantable repairs that are required as a result of defects due to materials and/or workmanship. Cosmetic corrosion resulting from defects is also covered under the Bumper-to-Bumper Limited Warranty. In addition, rust-through corrosion will be covered for 6 years/100,000 miles (whichever comes first; see dealer for details).

POWERTRAIN LIMITED WARRANTY Every 2023 GMC Canyon comes with a 5-year/60,000-mile (whichever comes first) Powertrain Limited Warranty. 24/7 Roadside Assistance and Courtesy Transportation are also offered for the duration of the Powertrain Limited Warranty. Please see your GMC dealer for details.

The New Vehicle Limited Warranty is generally transferable to subsequent owners of the vehicle. However, for Canyon AT4X Edition 1 only, bumper-to-bumper, powertrain, sheet metal, tire and accessory coverages will be voided if ownership of the vehicle is transferred from the original owner within the first 6 months after delivery. See dealer or limited warranty and Owner Assistance Information for details.

ONSTAR AND GMC CONNECTED SERVICES

Connected vehicle services vary by vehicle model and require working electrical system, cell reception and GPS signal. Requires active service plan. OnStar links to emergency services. See onstar.com for details and limitations.

GMC CERTIFIED SERVICE

To help your Canyon live up to its performance promise, GMC Certified Service—found exclusively at your GMC dealer—is there. With all the engineering excellence in Canyon, GM-trained technicians have the expertise to help care for it.

ADDITIONAL NOTES

A NOTE ON CHILD SAFETY Always use seat belts and the correct child restraint for your child’s age and size, even with airbags. Even in vehicles equipped with the Passenger Sensing System, children are safer when properly secured in a rear seat in the appropriate infant, child or booster seat. Never place a rear-facing infant restraint in the front seat of any vehicle equipped with an active frontal airbag. See the Owner’s Manual and the child safety seat instructions for more safety information.

TRAILERING AND OFF-ROAD DRIVING INFORMATION Please go to gmc.com and carefully review the vehicle Owner’s Manual for important safety information about trailering or off-road driving in your vehicle.

FLEET ORDERS Some standard content may be deleted on fleet orders. See dealer for details.

ENGINES GMC products are equipped with engines produced by GM Powertrain or other suppliers to GM worldwide. The engines in GMC products may also be used in other GM makes and models.

GMC.COM See more of Canyon on our website: gmc.com/canyon. More photos and information; hot links to related subjects; convenient dealer locator; pricing guide; spec out your own vehicle. Or call 1-800-GMC-8782.

IMPORTANT WORDS ABOUT THIS CATALOG We have tried to make this catalog comprehensive and factual. We reserve the right, however, to make changes at any time, without notice, in prices, colors, materials, equipment, specifications, models and availability. Specifications, dimensions, measurements, ratings and other numbers in this catalog and other printed materials provided at the dealership or affixed to vehicles are approximations based on design and engineering drawings, prototypes and laboratory tests. Your vehicle may differ due to variations in manufacture and equipment. Since some information may have been updated since the time of publication, please check with your GMC dealer for complete details. GMC reserves the right to lengthen or shorten the model year for any product for any reason or to start and end model years at different times. Certain vehicle features may lose their usefulness over time due to obsolescence from technological changes. Unless otherwise noted, all claims based on GM Mid Pickup segment and latest available competitive information available at time of publication. Excludes other GM vehicles.

AN IMPORTANT NOTE ABOUT ALTERATIONS AND WARRANTIES Installations or alterations to the original equipment vehicle (or chassis) as distributed by General Motors are not covered by the General Motors New Vehicle Limited Warranty. The special body company, assembler, equipment installer or upfitter is solely responsible for warranties on the body or equipment and any alterations (or any effect of the alterations) to any of the parts, components, systems or assemblies installed by GM. General Motors is not responsible for the safety or quality of design, features, materials or workmanship of any alterations by such employers.

ASSEMBLY GMC vehicles and their components are assembled or produced by different operating units of General Motors, its subsidiaries or suppliers to GM worldwide. We sometimes find it necessary to produce GMC vehicles with different or differently sourced components than originally scheduled. Since some options may be unavailable when your vehicle is assembled, we suggest you verify that your vehicle includes the equipment you ordered and that, if there were changes, they are acceptable to you.

GMMOBILITY.COM (1-800-323-9935) GM Mobility offers financial assistance for eligible adaptive equipment to make automotive travel easier for persons with disabilities or special transportation needs. To learn more about special GM Mobility offers, visit gmmobility.com.

©2023 General Motors. All rights reserved. GM, the GM logo, GMC, the slogans, emblems, vehicle model names, vehicle body designs and other marks appearing in this catalog are the trademarks and/or service marks of General Motors, its subsidiaries, affiliates or licensors. Facebook is a registered trademark of Meta Platforms, Inc. Twitter is a registered trademark of Twitter, Inc. Instagram is a registered trademark of Instagram, LLC. Sirius, XM and all related marks and logos are trademarks of SiriusXM Radio, Inc. Google, Android, YouTube, Android Auto and other marks are trademarks of Google LLC. Apple, CarPlay, iPhone and Siri are registered trademarks of Apple, Inc.



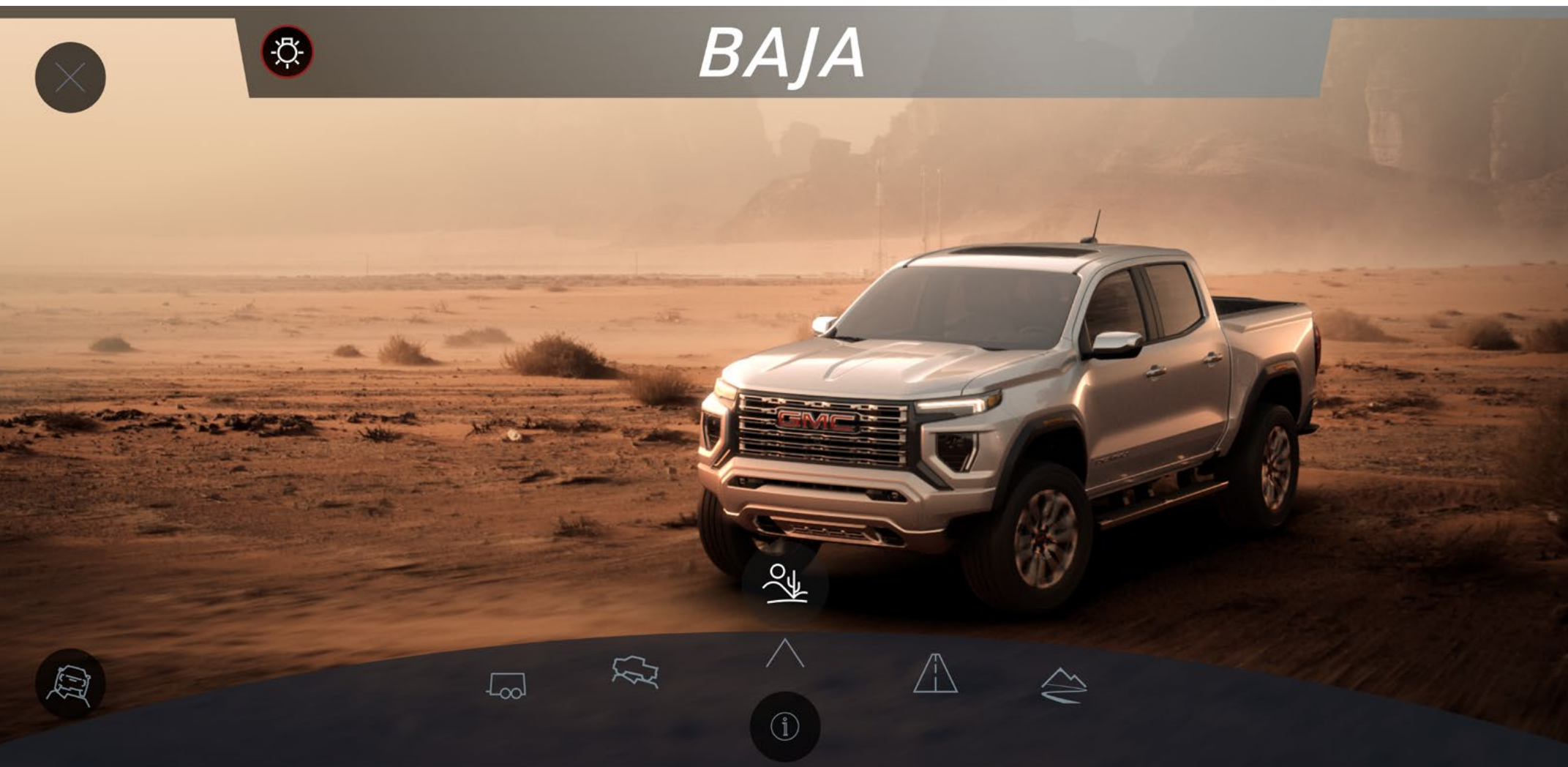
HIGH-TORQUE, OFF-ROAD-OPTIMIZED 2.7L ENGINE

- Best-in-Class Standard Gas Engine Torque¹
- 430 lb-ft of Torque
- 310 hp
- Available Max Towing Capacity² of 7,700 lbs



¹430 lb-ft of torque. Based on latest competitive data available. ²7,700-lb rating requires properly equipped Canyon Elevation, AT4 or Denali with available ProGrade Trailering System. Maximum trailering ratings are intended for comparison purposes only. Before you buy a vehicle or use it for trailering, carefully review the trailering section of the Owner's Manual. The trailering capacity of your specific vehicle may vary. The weight of passengers, cargo and options or accessories may reduce the amount you can trailer.





AVAILABLE SELECTABLE MODES:

BAJA MODE

- For High-Speed Off-Road, This Mode Adjusts the Steering, Throttle, Transmission Shift Points, Antilock Braking, Traction Control System Performance and More in Order to Maximize Response at Higher Speeds (AT4X-Exclusive)

TERRAIN MODE

- For Low-Speed Off-Road Conditions, Provides Extreme Control and Is Precision-Enabled for One-Pedal¹ Rock Crawling, Using Only the Accelerator

OFF-ROAD MODE

- For General Off-Road, Provides Additional Traction and Dynamic Performance While Off Pavement

NORMAL MODE

- Balanced Mode for Everyday Driving

TOW/HAUL MODE

- Optimized for Towing and Hauling

¹Always use the brake pedal if you need to stop immediately.





THE END OF THE ROAD IS ONLY THE BEGINNING

Get the optimal traction you need to take on mud and loose surfaces with Canyon’s available off-road inflate/deflate capability.

- Accessible Through the Center Touch-Screen
- Allows Drivers to Set Target Tire Pressure for Each Tire¹
- Driver Must Remove the Valve Cap, Then Press and Hold the Tire Valve Stem²
- Visual and Audible Alerts Outside of the Vehicle Will Alert the Driver When Target Pressure Is Achieved in Each Tire¹

×

Air Down Mode Active

- Exit vehicle and manually deflate tires one by one
- The horn will honk when each tire reaches the set target pressure
- Tap Exit Mode only when all 4 tires are at the target pressure


Exit Mode

Target Pressure: 15PSI

¹Does not apply to spare tire. ²After off-road use, inflate all tires to the recommended pressure shown on the Tire and Loading Information label.





¹To avoid the risk of injury, never use recovery hooks to tow a vehicle. For more information, see the Recovery Hooks section of the vehicle Owner's Manual. 

EXTERIOR FEATURES INCLUDE:

- LED Fog Lamps
- Red Recovery Hooks¹
- Unique AT4 Grille and Badging



THE FIRST EVER CANYON AT4X: THE MOST ADVANCED OFF-ROAD MIDSIZE TRUCK¹



¹Based on latest competitive data available.





¹Use only GM-approved tire and wheel combinations. See gmc.com/accessories for important tire and wheel information, or see your dealer.

EXTERIOR FEATURES INCLUDE:

- 5" Chrome Assist Steps
- Sculpted Chrome Grille With Chrome Exterior Accents
- 20" Exclusive Diamond-Cut Dark Gray Aluminum Wheels
- Spray-on Bedliner With Denali Logo
- Denali-Exclusive Badging
- 22" Accessory Wheels¹ Are Available



¹App functionality and features vary with vehicle equipment and trim level. Data connection may be required. Some features require active service plan and working electrical system. Terms and limitations apply. ²OnStar Safety & Security Plan, working electrical system, cell reception, GPS signal and armed GM factory-installed theft-deterrent system required. Requires contact method on file and enrollment to receive alerts. Message and data rates may apply. Service availability, features and functionality vary by vehicle. Services do not prevent theft or protect against damage or loss. OnStar links to emergency services. See onstar.com for details and limitations.

TOWING TECH

Canyon's available in-vehicle Trailering App¹ helps you tow your camper, ATVs and the gear you need with ease and confidence.

AVAILABLE IN-VEHICLE TRAILERING APP¹ FUNCTIONALITY INCLUDES:

- Trailer Detection and Custom Profiles
- Trailer Light Sequence Test and Diagnostics
- Predeparture Checklist
- Trailer Theft Detection²



GO FORTH WITH CONFIDENCE

GMC CANYON PRO SAFETY¹ IS STANDARD ON EVERY CANYON AND INCLUDES:

- Automatic Emergency Braking
- Front Pedestrian and Bicyclist Braking
- IntelliBeam—Auto High Beams
- Following Distance Indicator (Late Availability²)
- Lane Keep Assist With Lane Departure Warning
- Forward Collision Alert



¹Safety or driver-assistance features are no substitute for the driver's responsibility to operate the vehicle in a safe manner. Read the vehicle Owner's Manual for important feature limitations and information.

²Requires a no-charge software update.





¹Connected vehicle services vary by vehicle model and require active service plan, working electrical system, cell reception and GPS signal. OnStar links to emergency services. See onstar.com for details and limitations. ²OnStar plan, working electrical system, cell reception and GPS signal required. OnStar links to emergency services. See onstar.com for details and limitations. ³Connected Vehicle Plan does not include emergency or security services. Service varies with conditions and location. Data plans provided by AT&T®. See onstar.com for details and limitations. ⁴Available on select GM vehicles with compatible hardware. Third-party trademarks are the property of their respective third-party owners and used under agreement. Requires active service plan and paid AT&T vehicle data plan. ⁵Service varies with conditions and location. Requires active service plan and paid AT&T data plan. See onstar.com for details and limitations. ⁶U.S. and Canada only. Available on select Apple® and Android devices. Mobile Crash Response services are intended for use in vehicles only and can connect automatically on Android devices only. Service coverage varies with conditions and location. Service availability, features and functionality vary by device and software version. Device permissions are required for app to operate properly. OnStar links to emergency services. Device and app may not transmit all crash data. See onstar.com for details and limitations. ⁷Available on select Apple® and Android™ devices. Service availability, features and functionality vary by vehicle, device and the plan you are enrolled in. Terms apply. Device data connection required. See onstar.com for details and limitations. ⁸Automatic Crash Response may not transmit all crash data. ⁹Roadside services provided by Allstate Roadside Services for vehicles only. Limitations and restrictions apply. ¹⁰Stolen Vehicle Assistance requires armed GM factory-installed theft-deterrent system, contact method on file and enrollment to receive alerts. Additional messaging and data rates may apply. Services are intended to assist with vehicle recovery and do not prevent theft or protect against damage or loss. ¹¹Functionality is subject to limitations and varies by vehicle, infotainment system and location. Select service plan required. Certain Alexa Skills require account linking to use. Amazon, Alexa and all related marks are trademarks of Amazon.com, Inc., or its affiliates. See onstar.com for additional details.

KEEP YOUR CONNECTIONS STRONG

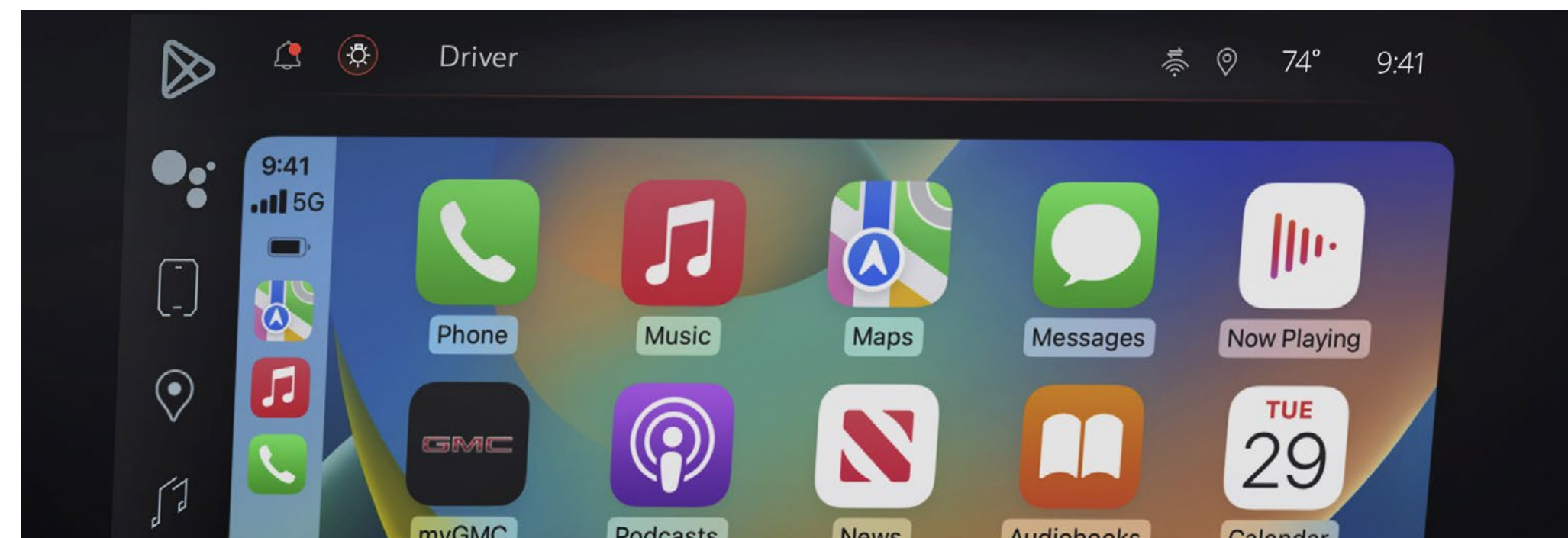
Three years of the OnStar® and Connected Services Premium Plan¹ are included on all 2023 Canyon models. With this plan, you can enjoy the added peace of mind of the OnStar Safety & Security Plan² and the complete suite of available connectivity features included in the Connected Vehicle Plan.³

ONSTAR AND CONNECTED SERVICES PREMIUM PLAN INCLUDES:

- In-Vehicle App⁴ Access
- In-Vehicle Wi-Fi® Hotspot Data⁵
- OnStar Guardian™ app⁶
- myGMC Mobile App⁷
- Automatic Crash Response⁸
- Emergency Services
- Crisis Assist
- Roadside Assistance⁹
- Stolen Vehicle Assistance¹⁰
- Alexa Built-in¹¹

STAY IN COMMAND WHEREVER THE ACTION LEADS

- Wireless Apple CarPlay® Compatibility¹
- Wireless Android Auto™ Compatibility²
- Wireless Charging³ Is Available



¹Vehicle user interface is a product of Apple® and its terms and privacy statements apply. Requires compatible iPhone® and data plan rates apply. Apple CarPlay, Siri, iPhone and Apple Music are trademarks of Apple, Inc., registered in the U.S. and other countries. ²To wirelessly use Android Auto on your car display, you need a compatible Android smartphone with an active data plan. You can check which smartphones are compatible at g.co/androidauto/requirements. Google, Android, Android Auto, YouTube Music and other marks are trademarks of Google LLC. ³The system wirelessly charges one compatible mobile device. Some phones have built-in wireless charging technology and others require a special adapter/back cover. To check for phone or other device compatibility, see my.gmc.com/learn or consult your carrier.



GET THERE WITH GOOGLE BUILT-IN

With available Google built-in¹ compatibility and a 3-year GMC Connected Vehicle subscription included on all Canyon trims, you will receive a helpful, personalized and seamless way to enhance your in-vehicle experience. With Google Assistant, Google Maps and more on Google Play, you get access to hands-free help, live traffic updates, some of your favorite apps and more.

¹Google built-in services are subject to limitations, and availability may vary by vehicle, infotainment system and location. Select service plan required. Certain Google actions and functionality may require account linking. User terms and privacy statements apply. Google, Google Play and Google Maps are trademarks of Google LLC.





EXPLORE MORE, ALEXA'S ON BOARD

Alexa functionality is fully integrated into your GMC Infotainment System.¹ With 3 years of standard Amazon Alexa Built-in,² you can ask Alexa to stream your favorite music services such as Spotify^{®3} or Amazon Music, get directions, make calls, change your radio station and get routes to the nearest dealership—on the go. Alexa can also make shopping lists, play and resume audiobooks and get the score to last night's game.

¹Functionality varies by model. Full functionality requires compatible Bluetooth[®] and smartphone, and USB connectivity for some devices. ²Functionality is subject to limitations and varies by vehicle, infotainment system and location. Select service plan required. Certain Alexa Skills require account linking to use. Amazon, Alexa, Amazon Music and all related marks are trademarks of Amazon.com, Inc., or its affiliates. See onstar.com for additional details. ³Spotify app requires active Spotify account. Visit spotify.com/auto on your smartphone, tablet or computer for terms and to set up an account. Available on select model year 2018 and newer infotainment systems with compatible hardware. Select service plan required.



HELP WHEN YOU NEED IT

With 3 years of OnStar Safety and Security, you'll have added peace of mind knowing an Emergency Advisor¹ is ready to help. Whether it's a crash, a vehicle theft or an emergency situation, help is available 24/7.

The Safety & Security Plan² includes the OnStar Guardian app,³ which lets you access the key OnStar safety services you depend on right from your phone. Help in a crash, assistance with a flat tire and more are available through your smartphone. Best of all, you can share OnStar Guardian with up to seven of your loved ones at no additional cost.



¹OnStar Emergency Advisors are certified by the International Academies of Emergency Dispatch.

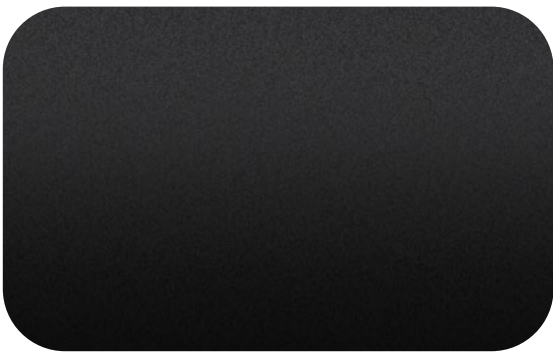
²OnStar plan, working electrical system, cell reception and GPS signal required. OnStar links to emergency services. Not all vehicles may transmit all crash data. See onstar.com for details and limitations. ³U.S. and Canada only. Available on select Apple® and Android devices. Mobile Crash Response services are intended for use in vehicles only and can connect automatically on Android devices only. Service coverage varies with conditions and location. Service availability, features and functionality vary by device and software version. Device permissions are required for app to operate properly. OnStar links to emergency services. Device and app may not transmit all crash data. See onstar.com for details and limitations.



FIND YOUR TRUE COLORS



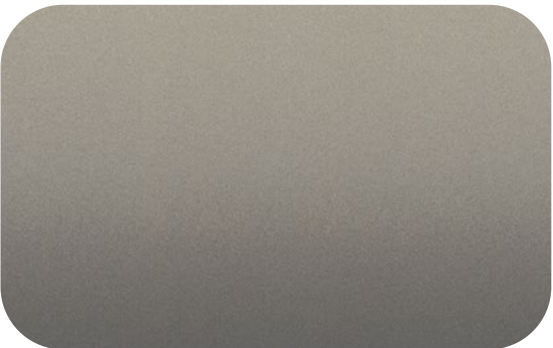
SUMMIT
WHITE



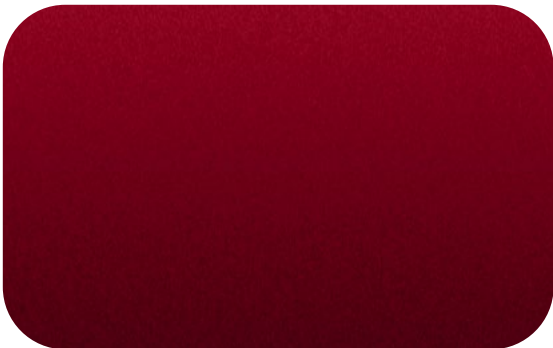
ONYX
BLACK¹



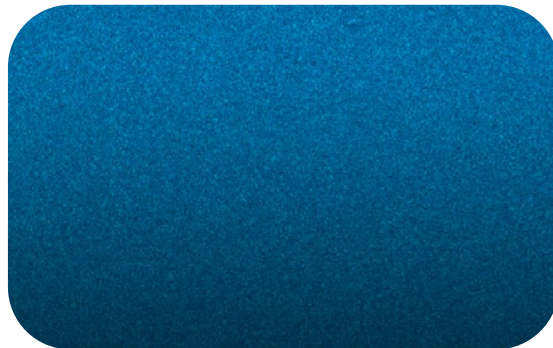
SOLAR FLARE
METALLIC^{1, 2}



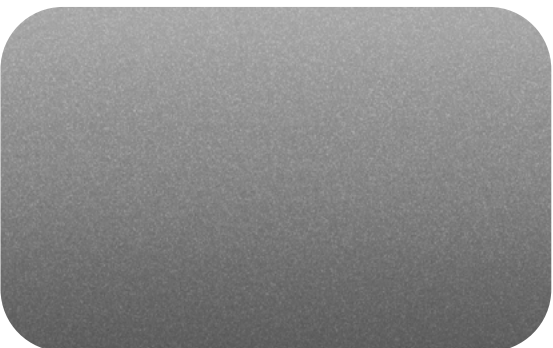
DESERT SAND
METALLIC^{1, 2}



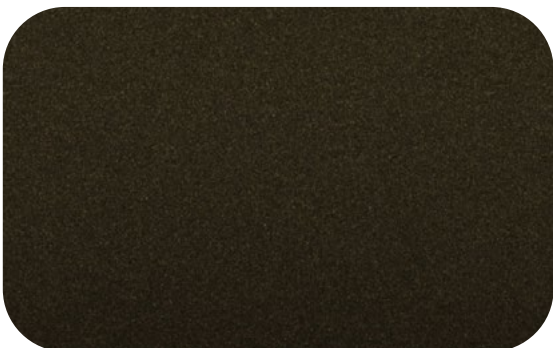
VOLCANIC RED
TINTCOAT¹



DYNAMIC BLUE
METALLIC^{1, 2}



STERLING
METALLIC¹



DEEP BRONZE
METALLIC¹

¹Extra-cost color.
²Not available on Denali.

