

2023 GMC

SIERRA



GMC

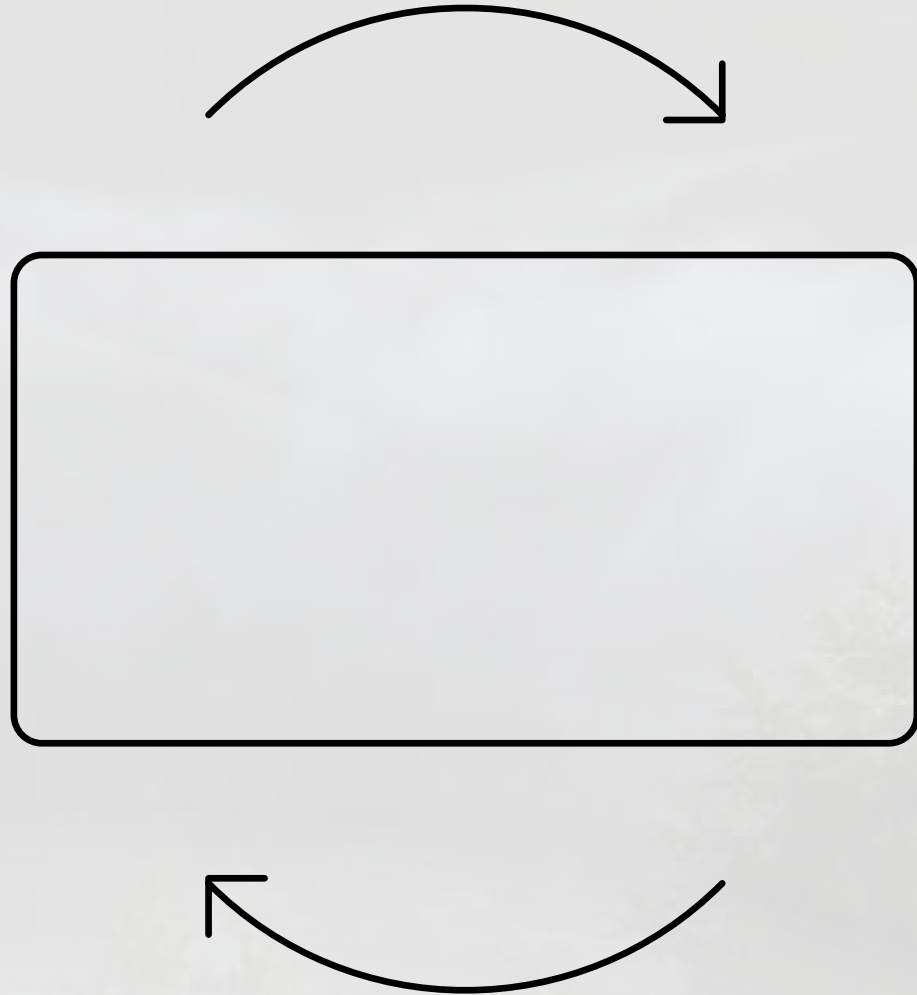
NAVIGATION GUIDE

3

CLICK THE HOME BUTTON TO
RETURN TO THE TABLE OF CONTENTS.



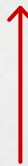
1



ROTATE FOR A BETTER VIEWING EXPERIENCE.



— USB Ports¹



2

CLICK ON UNDERLINED TEXT TO REVEAL
IMPORTANT LEGAL INFORMATION.

4

CLICK THE X TO CLOSE DISCLOSURES.



¹Not compatible with all devices.



SIERRA 1500

CONTENTS

CLICK ANY TITLE TO EXPLORE A SPECIFIC CHAPTER.

3	INTRODUCTION	16	DENALI ULTIMATE	46	SLE	57	PROGRADE TRAILERING	72	INTERIOR COLORS AND TEXTURES
5	TECHNOLOGY	21	AT4	47	GMC PRO SAFETY	62	TRUCK BED	74	WHEELS
8	FIRST-CLASS LUXURY	26	NEW 2023 AT4X	48	MULTIPRO	63	SAFETY AND TECHNOLOGY	78	ACCESSORIES
9	SIERRA MODELS	37	SLT	50	CARBONPRO	67	CONNECTIVITY	82	IMPORTANT WORDS AND LEGAL DISCLOSURES
11	DENALI	42	ELEVATION	52	POWERTRAINS	71	EXTERIOR COLORS		



MEET THE 2023 GMC SIERRA



The 2023 GMC Sierra 1500 sets the Professional Grade standard. With powerful capability, bold presence and advanced technology, Sierra delivers what it takes to handle what life throws your way.



**SIERRA DENALI ULTIMATE IS
THE MOST ADVANCED AND
LUXURIOUS PICKUP IN ITS CLASS¹**

Get after it on the road or the trail in the premium and capable 2023 Sierra featuring the Sierra Denali Ultimate. With robust power, bold styling and an ultra-premium interior, Sierra is engineered and crafted to exceed your expectations.



SUPER CRUISE HANDS-FREE DRIVER-ASSISTANCE TECHNOLOGY: THE NEXT GENERATION OF TRAVEL

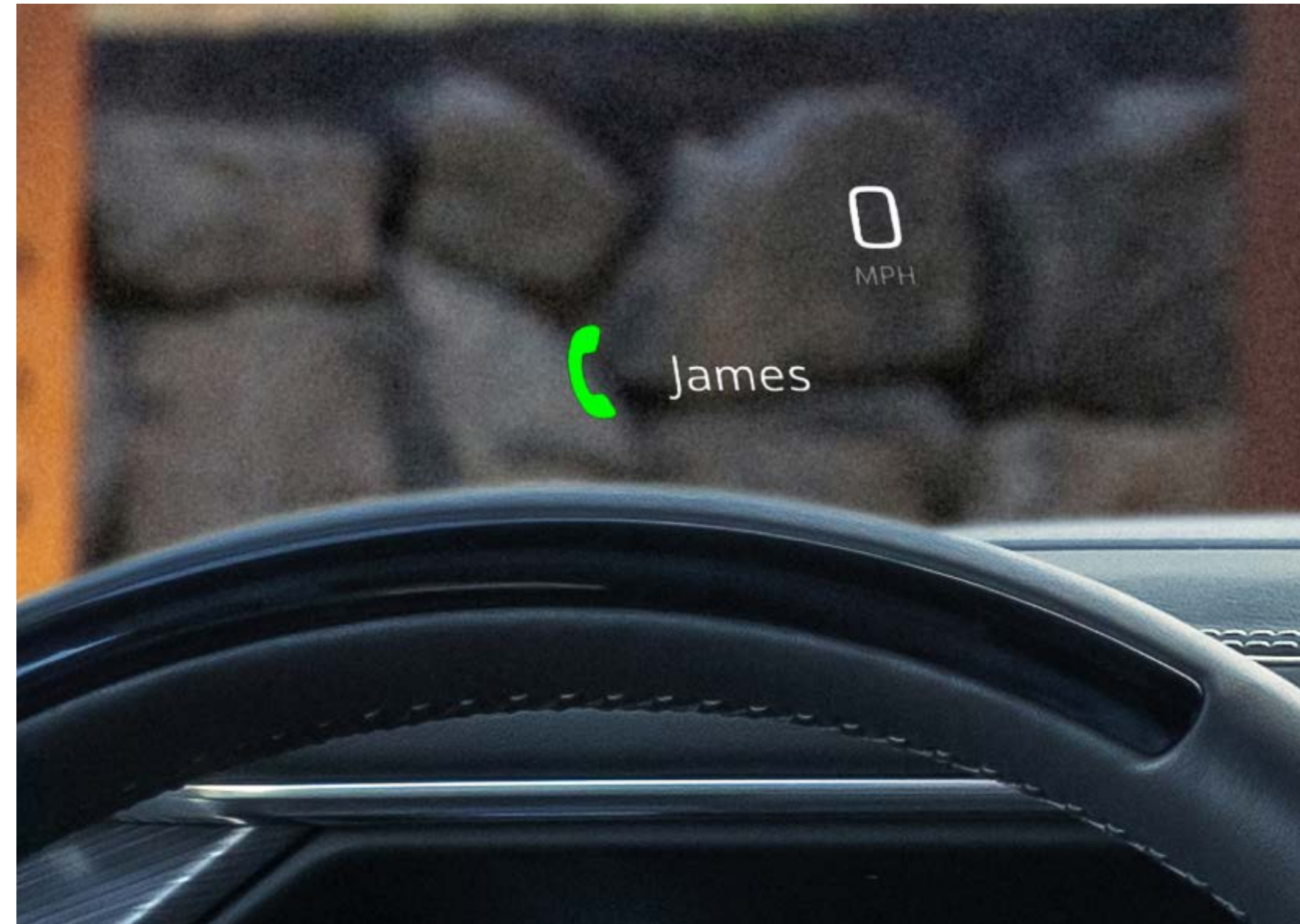
The future starts now. Travel hands-free on more than 400,000 miles, and counting, of compatible roads in the U.S. and Canada with available Super Cruise¹ driver-assistance technology.

Engineered for a new kind of freedom, this advanced technology performs automatic hands-free lane changing to maintain your set speed or allows you to pull your trailer hands-free.





OVER 40" (DIAGONAL) OF CUSTOMIZABLE SCREENS



Inside Sierra, large, gorgeous screens enhance your driving experience, offering over 40" (diagonal) of combined driver-focused digital displays—the most in its class.¹

- 13.4" Diagonal Center Touch-Screen Is Available
- Multicolor 15" Diagonal Head-Up Display Is Available
- 12.3" Diagonal Customizable Driver Information Center Is Available

YOUR SCREENS YOUR WAY

The 13.4" diagonal GMC Infotainment System,¹ standard on SLE, Elevation, SLT, AT4, AT4X, Denali and Denali Ultimate, offers a wide range of screen combinations, features and reconfigurability, taking personalization to a whole new level.



Available features shown.



AN UNCOMPROMISINGLY PREMIUM INTERIOR

Beautiful styling, first-class comfort and available high-end leather seating make the 2023 Sierra the most luxurious Sierra ever. Depending on the trim, Sierra offers a variety of luxurious upgrades and premium enhancements.



SIERRA OFFERS THE PREMIUM AND CAPABLE TRUCK YOU NEED



Get it done in the rugged,
capable and all-business
Sierra Pro.



Boldly rise above in the
premium cloth interior of
Sierra SLE.



Monochromatic styling
stands out everywhere
you go in **Sierra Elevation.**



Work or play hard in the
innovative, premium and
capable **Sierra SLT.**



SIERRA OFFERS THE PREMIUM AND CAPABLE TRUCK YOU NEED



Take on the tough backcountry with a factory-installed 2" suspension lift in **Sierra AT4**.



Next-level adventure starts with advanced capability features such as front and rear e-locking differentials in the New 2023 **Sierra AT4X**.



Rise to the upper limits of what premium and capable luxury can be in **Sierra Denali**.



Take on the world in the most advanced and luxurious pickup in its class,¹ the 2023 **Sierra Denali Ultimate**.



DENALI SETS THE STANDARD

Featuring amenities reserved for the finest vehicles along with signature Denali styling, Sierra Denali is first-class in every way.





STAND APART WITH SIGNATURE STYLING



Denali includes eye-catching features that give the vehicle its signature, standout good looks.

- Bold Front Fascia Design Includes Unique Denali Chrome Grille, Along With Exclusive Available 22" Painted Aluminum Wheels With Machining and Bright Chrome Inserts
- GMC MultiPro™ Power Assist Steps Are Available

- Chrome Vertical Front Recovery Hooks¹
- Dual-Projector LED Headlamps
- GMC Daytime Running Lamps With Signature C-Shape Design



ENJOY DENALI LUXURY

Due to current supply-chain shortages, certain features shown have limited or late availability, or are no longer available. See the window label or a dealer regarding the features on an individual vehicle.



FIRST-CLASS ALL THE WAY

- Spacious Interior Features Best-in-Class¹ Crew Cab Front Head and Leg Room
- Perforated Forge Leather Seating Surfaces With Contrasting Stitch Pattern
- Patterned Aluminum Trim and Chrome Accents
- Premium Instrument Panel and Door Trim With Chrome and Authentic Open-Pore Walnut Wood Detailing

- Embroidered Denali Logo on Front Seatbacks
- 10-Way Power Driver and Front-Passenger Seats, Including Two-Way Lumbar Control, Power-Rake/-Telescoping Steering Column and Driver-Seat Memory
- Etched Stainless-Steel Speaker Grille Details



SIERRA DENALI FEATURES ADVANCED TECH:

- Up to 14 Available Camera Views,¹ Including Transparent Trailer View
- Bose® Audio System With Richbass Woofer
- Rainsense Wipers
- 12.3" Diagonal Reconfigurable Driver Information Center
- 13.4" Diagonal Customizable Center Touch-Screen
- With Google built-in Compatibility,² With 3-Year GMC Connected Vehicle³ Subscription Included
- Multicolor 15" Diagonal Head-Up Display and Rear Camera Mirror⁴ Are Available



**SIERRA DENALI ULTIMATE:
THE MOST ADVANCED AND
LUXURIOUS PICKUP IN ITS CLASS¹**

Sierra Denali Ultimate is the ultimate expression of signature Denali style, luxury and technological innovation.



SIERRA DENALI ULTIMATE IS THE APEX OF PROFESSIONAL GRADE



SIERRA DENALI ULTIMATE FEATURES:

- Over 40" (Diagonal) of Combined Driver-Focused Digital Displays—the Most in Its Class¹
- Up to 14 Available Camera Views,² Including Transparent Trailer View
- World's First Six-Function MultiPro Tailgate With KICKER^{®3} Audio System
- CarbonPro™ Carbon-Fiber Composite Bed Is Available

TURN HEADS WITH ULTIMATE STYLE

SIERRA DENALI ULTIMATE EXTERIOR FEATURES:

- Dual-Projector LED Headlamps and Daytime Running Lamps With Fade-On/Fade-Off Animated Lighting Sequences
- Signature Denali Grille Finished in Exclusive Vader Chrome
- Vader Chrome GMC Badging
- Unique Denali Ultimate Fender Badging
- Exclusive 22" 7-Spoke Ultra-Bright Machined Aluminum Wheels With Bright Chrome Accents and Dark Paint
- GMC MultiPro Power Assist Steps
- World's First Six-Function MultiPro Tailgate with KICKER®¹ Audio System
- CarbonPro Carbon-Fiber Composite Bed Is Available





LUXURIOUS DETAILS TELL THE ULTIMATE STORY

Sierra Denali Ultimate's signature styling and technological innovations deliver first-class luxury with full-grain leather seating, laser-etched Paldao wood and stunning, massive screens, providing first-class comfort all around.

Due to current supply-chain shortages, certain features shown have limited or late availability, or are no longer available. See the window label or a dealer regarding the features on an individual vehicle.

TAKING PREMIUM TO EXCITING PLACES

SIERRA DENALI ULTIMATE INTERIOR FEATURES:

- Refined Alpine Umber Interior With Full-Grain Leather Seating and Double Helix, Plaited Contrast Stitching
- Heated and Ventilated Best-in-Class¹ 16-Way Power Front Seats With Massaging Feature
- Exclusive Denali Ultimate Metal Badging on Front Seatbacks and Doors
- Authentic Open-Pore Paldao Wood-Accented Instrument Panel and Doors
- Topographical Map Patterns of Mt. Denali's Summit Embossed and Laser-Etched Across the Interior
- Premium Microsuede Headliner, Sun Visors and Pillars
- Over 40" (Diagonal) of Combined Driver-Focused Digital Displays—the Most in Its Class¹





SATISFY YOUR HUNGER FOR ADVENTURE

The end of the road is only the beginning
because Sierra AT4 is created to go beyond
the boundaries and discover what's out there.

AT4

Due to current supply-chain shortages, certain features shown have limited or late availability, or are no longer available. See the window label or a dealer regarding the features on an individual vehicle.



EXPLORE BEYOND THE BOUNDARIES: SIERRA AT4



- Factory-Installed 2" Suspension Lift
- 2-Speed AutoTrac Transfer Case, Automatic-Locking Rear Differential and Skid Plates
- Off-Road-Tuned Rancho® Monotube Shock Absorbers

- High-Clearance Off-Road Steps Are Available
- Distinct Exterior Design With Black Chrome Accents
- Red Vertical Recovery Hooks¹

- Off-Road Mud Terrain-Rated Goodyear® Wrangler Tires
- 3.0L Duramax Turbo Diesel Engine Is Standard
- 6.2L Gas V8 Engine Is Available



CONQUER ROUGH BACKCOUNTRY

The 2" factory-installed suspension lift and Traction Select System with Off-Road mode help to take on off-road obstacles.



Due to current supply-chain shortages, certain features shown have limited or late availability, or are no longer available. See the window label or a dealer regarding the features on an individual vehicle.



TAKE PREMIUM BEYOND THE BOUNDARIES

Inside AT4, you'll find an athletic, purposeful interior designed for your active lifestyle. It features unique darkened brushed aluminum trim, perforated front leather seating surfaces in Jet Black with Kalahari accents and smart storage compartments.

Due to current supply-chain shortages, certain features shown have limited or late availability, or are no longer available. See the window label or a dealer regarding the features on an individual vehicle.

AT4



ADVENTURE WILL NEVER BE THE SAME

- Premium AT4 Interior in Jet Black With Kalahari Accents
- Premium All-Weather Floor Liners With Removable Carpet Inserts
- Rainsense Wipers
- 12.3" Diagonal Reconfigurable Driver Information Center
- 13.4" Diagonal Customizable Center Touch-Screen
- Multicolor 15" Diagonal Head-Up Display and Rear Camera Mirror¹ Are Available

Due to current supply-chain shortages, certain features shown have limited or late availability, or are no longer available. See the window label or a dealer regarding the features on an individual vehicle.



NEW 2023 SIERRA AT4X: THE PEAK OF PREMIUM OFF-ROADING

The New 2023 Sierra AT4X is taking capability and luxury to new summits. Inspired by the First Ever AEV Edition, the New 2023 Sierra AT4X receives key off-road enhancements for added capability and even more assertive styling.



Available accessories shown.



NEW 2023 AT4X

AT4X AEV EDITION

THE NEW 2023 SIERRA AT4X RECEIVES THESE AEV-INSPIRED ENHANCEMENTS:

- AEV Stamped-Steel Front Bumper With 34-Degree Front Approach Angle and Winch Capability
- Ultra-High-Strength Boron Steel Front Approach Skid Plate
- New Larger 33" Goodyear Wrangler Territory Mud-Terrain Tires
- Redesigned Front Fascia and Grille With Gloss-Black Upper and Dark Nickel Inserts

Available accessories shown.



Available accessories shown.



Available features shown.

NEW 2023 SIERRA AT4X FEATURES:

- Front and Rear Electronic-Locking Differentials, a Combination Not Offered on Any Competitor in Its Class¹
- Advanced Off-Road Suspension With Multimatic™ DSSV Dampers
- World's First Six-Function MultiPro Tailgate with KICKER®² Audio System

ULTRA-PREMIUM INTERIOR FEATURES INCLUDE:

- Exclusive Obsidian Rush Interior With Full-Grain Leather Seats
- Technical-Grain Leather-Accented Seats and Door Panels
- Premium Leather-Trimmed Instrument Panel and Door Panels Accented With Black-Finished Authentic Vanta Ash Wood Trim
- Over 40" (Diagonal) of Combined Driver-Focused Digital Displays—the Most in Its Class³



GO BEYOND THE LIMITS WITH ADVANCED OFF-ROAD CAPABILITY



AT4X FEATURES:

- Specific Off-Road Chassis and Tuning
- Terrain Mode, Ideal for Low-Speed, Off-Road Conditions. It Provides Extreme Control and Is Precision-Enabled for One-Pedal¹ Rock Crawling, Using Only the Accelerator.
- Multimatic DSSV Dampers, Featuring Three Separate Spool Valves to Control Damping and Three Connected Chambers for Fluid Flow
- Uniquely Tuned Springs to Increase Maximum Front and Rear Suspension Travel
- Available Accessory Rocker Protection
- Protected Dual-Outlet Exhaust
- Front and Rear Electronic-Locking Differentials
- Unique 18" Wheels With High-Gloss Black Finish and New Larger 33" Goodyear Wrangler Territory Mud-Terrain Tires
- Ultra-High-Strength Boron Steel Front Approach Skid Plate and Large Steel Transfer Case Skid Plate



CAPABILITY WITHOUT COMPROMISE

Due to current supply-chain shortages, certain features shown have limited or late availability, or are no longer available. See the window label or a dealer regarding the features on an individual vehicle.



EXPLORE THE ULTRA-PREMIUM INTERIOR

The New 2023 AT4X features a luxurious, athletic Obsidian Rush interior designed to let you explore beyond the boundaries of the road in ultra-premium style. AT4X also features heated and ventilated best-in-class¹ 16-way power front seats with a massage feature, making all your travels first-class.

Due to current supply-chain shortages, certain features shown have limited or late availability, or are no longer available. See the window label or a dealer regarding the features on an individual vehicle.



REFINED INTERIOR DETAILS



NEW 2023 AT4X INTERIOR FEATURES:

- Refined Obsidian Rush Interior With Full-Grain Leather Seats, Red and White Double-Needle Stitching and Technical-Grain Leather Accents
- Metal AT4X Badging on Front Seatbacks and Doors
- Premium Leather-Trimmed Instrument Panel and Door Panels Accented With Black-Finished Authentic Vanta Ash Wood Trim
- Premium Microsuede Headliner, Sun Visors and Pillars
- Etched Stainless-Steel Speaker Grille Details
- Best-in-Class¹ 16-Way Power-Adjustable Front Seats With Massage Feature



EQUIPPED TO MASTER UNFORGIVING TERRAIN

THE FIRST EVER SIERRA AT4X AEV EDITION

Take on the rigors of untamed backcountry and the challenges of off-road adventure in the First Ever Sierra AT4X AEV Edition.

Equipped by AEV—top off-road recreational driving and overland adventure travel customizers—the Sierra AT4X AEV Edition brings you the next level of AT4X off-road capability.



Available accessories shown.



AEV STAMPED-STEEL FRONT AND REAR BUMPERS

Summit rugged topography with a 32.5-degree front approach angle and an optimized 23.4-degree departure angle with AEV heavy-duty, hot-stamped-steel powder-coated and e-coated front and rear bumpers.



Available accessories shown.



AEV HOT-STAMPED BORON STEEL SKID PLATES

Take on tough terrain and keep on going thanks to rugged underbody protection with press-hardened boron steel skid plates.

These ultra-high-strength skid plates, more than 3.5 times stronger than equivalent cold-stamped high-strength steel, help protect vital components such as the front approach, steering gear, transfer case, fuel tank and rear differential from rocks, stumps and other adversities of the trail.



Available accessories shown.



EXCLUSIVE AEV EDITION DESIGN ELEMENTS



The AT4X AEV Edition's bold styling stands out with the exclusive details you expect from a true overland custom build.

- Gloss-Black Door Handles and Black Tailgate Accent
- AEV Badging on the Exterior and Interior

- AEV Racing-Inspired Salta Wheels With 12-Spoke Design and Recessed Valve Stems



THE REAL DEAL

Sierra SLT delivers the style, refinement, capability, power and efficiency your life demands of your truck.



Due to current supply-chain shortages, certain features shown have limited or late availability, or are no longer available. See the window label or a dealer regarding the features on an individual vehicle.



Take control with SLT's bold stance and large bed and stand out with high-intensity LED headlamps, LED taillamps and chrome accents.

SIERRA SLT FEATURES:

- Wide, Bold Bumper, Fascia and Grille Design
- Dual-Projector LED Headlamps With Signature C-Shape Design
- 20" Polished Aluminum Wheels With Technical Gray Painted Accents Are Available



Due to current supply-chain shortages, certain features shown have limited or late availability, or are no longer available. See the window label or a dealer regarding the features on an individual vehicle.



MAKE THINGS HAPPEN

SIERRA SLT FEATURES:

- Cargo Bed Volume¹: 62.9 cu. ft. (Short Bed) or 71.7 cu. ft. (Standard Bed)
- CornerStep Rear Bumper
- 5.3L V8 Engine Paired With a 10-Speed Automatic Transmission Is Standard
- World's First Six-Function GMC MultiPro Tailgate² Is Available
- 6.2L Gas V8 and 3.0L Duramax Turbo Diesel Engines Are Available
- X31 Off-Road Package Is Available



Due to current supply-chain shortages, certain features shown have limited or late availability, or are no longer available. See the window label or a dealer regarding the features on an individual vehicle.



RISE ABOVE IN SIERRA SLT

Sierra SLT's upgraded interior heightens your driving experience with a driver-centric instrument panel, along with an available center console featuring Electronic Precision Shift.

Due to current supply-chain shortages, certain features shown have limited or late availability, or are no longer available. See the window label or a dealer regarding the features on an individual vehicle.



- Large 13.4" Diagonal Color Touch-Screen Is Complemented by a 12.3" Diagonal Configurable Driver Information Center
- Storage Areas in Rear Seatback and Under Rear Seat

- 10-Way Power Driver and Front-Passenger Seats, Including Two-Way Lumbar Control, Driver-Seat Memory and Available Power-Rake/-Telescoping Steering Column
- Front Leather-Appointed Bucket Seats Are Available

Due to current supply-chain shortages, certain features shown have limited or late availability, or are no longer available. See the window label or a dealer regarding the features on an individual vehicle.



ALTITUDE IS EVERYTHING

Sierra Elevation goes all in with bold monochromatic styling and premium upgrades that confidently announce that something truly unique has arrived.



Available accessories shown.

ELEVATION



TOUGH AND ELEVATED INTERIOR

- Cloth Interior and 40/20/40 Front Bench Seat
- Customizable 13.4" Diagonal Center Touch-Screen and a 12.3" Diagonal Configurable Driver Information Center
- Best-in-Class¹ Crew Cab Front Head and Leg Room
- Heated Driver and Front Outboard Passenger Seats

Due to current supply-chain shortages, certain features shown have limited or late availability, or are no longer available. See the window label or a dealer regarding the features on an individual vehicle.



RUGGED YET REFINED

The available Elevation Premium Package includes first-class Jet Black leather-appointed front bucket seats, tech-savvy features such as available wireless charging¹ and more.

Due to current supply-chain shortages, certain features shown have limited or late availability, or are no longer available. See the window label or a dealer regarding the features on an individual vehicle.



ELEVATED DETAILS



- Signature Front Fascia and Grille Design
- 20" Gloss-Black Painted Aluminum Wheels

- 2.7L Turbo High-Output Engine With Active Fuel Management Is Standard
- 5.3L Gas V8 or 3.0L Duramax Turbo Diesel Engines Are Available



SLE



A JOB WELL DONE IS A JOB DONE WELL

Sierra SLE has what it takes to get the job done right. Robust capability and premium comfort help to make time spent behind the wheel the best part of your day.



GO FORTH WITH CONFIDENCE

GMC PRO SAFETY¹ IS STANDARD ON 2023 SIERRA MODELS AND INCLUDES:

- Lane Keep Assist With Lane Departure Warning
- Automatic Emergency Braking
- Forward Collision Alert
- Following Distance Indicator
- Front Pedestrian Braking
- IntelliBeam—Auto High Beams



MULTIFACETED, MULTIFUNCTIONAL INNOVATION

The available MultiPro Tailgate¹ adds even more functionality to Sierra.

AVAILABLE MULTIPRO ACCESSORIES:

- Take Your Music Outdoors With the Accessory MultiPro Audio System by KICKER^{®2}—Standard on AT4X and Denali Ultimate and Available on SLE, Elevation, SLT, AT4 and Denali
- Illuminate Your Destination With Available Dealer-Installed Accessory LED Lighting





MADE TO STAND TOUGH

Tackle tough tasks with the available CarbonPro bed, purpose-built from a carbon-fiber composite for hard-bitten resiliency and tenacious durability to help protect against scratches, dents and corrosion.



THE AVAILABLE CARBONPRO BED OFFERS:

- **STRENGTH, DURABILITY AND SCRATCH RESISTANCE:** CarbonPro's Carbon-Fiber Composite Bed Material Offers Excellent Scratch, Dent and Corrosion Resistance
- **CORROSION RESISTANCE:** CarbonPro Composite Naturally Resists Corrosion, Helping the Bed Withstand Weathering to Maintain a Premium Appearance
- **REDUCED WEIGHT:** CarbonPro Weighs 25 Percent Less Than the Steel Bed, Eliminating Roughly 60 lbs of Vehicle Mass
- **MORE VOLUME:** CarbonPro Increases the Already-Generous Cargo Volume of Sierra's Steel Bed by 1 cu. ft.
- **MORE FUNCTIONALITY:** CarbonPro Features Three Molded-in Sections for Wheels and Two Additional Tie-Downs (14 Total) to Ease the Loading and Securing of Dirt Bikes and ATVs





READY, WILLING AND INCREDIBLY ABLE

Make it happen with Sierra's impressive capability with up to 13,200 lbs¹ of max trailering (8,800 lbs¹ as shown). Sierra offers a choice of available robust engines to give you the power to take on the open road or the trail to get the job done.





6.2L V8 ENGINE

- 420 Horsepower
- 460 lb-ft of Torque
- 10-Speed Automatic Transmission
- Dynamic Fuel Management
- EPA-Estimated 15 mpg City/19 mpg Highway for SLT, Denali and Denali Ultimate
- EPA-Estimated 14 mpg City/17 mpg Highway for AT4 and AT4X With Mud-Terrain Tires
- Standard on AT4X and Denali Ultimate
- Available on 4WD-Equipped SLT, AT4 and Denali



3.0L DURAMAX TURBO DIESEL ENGINE

- 305 Horsepower
- 495 lb-ft of Torque
- 10-Speed Automatic Transmission
- Active Thermal Management
- EPA-Estimated 24 mpg City/29 mpg Highway (2WD),
With a Maximum Highway Range of 638 Miles¹ per Tank
- EPA-Estimated 22 mpg City/27 mpg Highway (4WD),
With a Maximum Highway Range of 648 Miles¹ per Tank
- EPA-Estimated 21 mpg City/23 mpg Highway (4WD With Mud-Terrain
Tires), With a Maximum Highway Range of 552 Miles¹ per Tank
- Standard on AT4 (Not Available on AT4X)
- Available on SLE, Elevation, SLT, Denali and Denali Ultimate



Due to current supply-chain shortages, certain features shown have limited or late availability, or are no longer available. See the window label or a dealer regarding the features on an individual vehicle.



5.3L V8 ENGINE

- 355 Horsepower
- 383 lb-ft of Torque
- 10-Speed Automatic Transmission
- EPA-Estimated 16 mpg City/21 mpg Highway (2WD)
- Standard on SLT and Denali
- Available on Pro, SLE and Elevation



Due to current supply-chain shortages, certain features shown have limited or late availability, or are no longer available. See the window label or a dealer regarding the features on an individual vehicle.

2.7L TURBO HIGH-OUTPUT ENGINE

- 310 Horsepower
- 430 lb-ft of Torque
- 8-Speed Automatic Transmission
- Active Fuel Management
- EPA-Estimated 19 mpg City/22 mpg Highway (2WD)
- EPA-Estimated 18 mpg City/20 mpg Highway (4WD)
- EPA-Estimated 17 mpg City/18 mpg Highway (4WD With Mud-Terrain Tires)
- Standard on Pro, SLE and Elevation



Available accessories shown.



**PULL IT ALL TOGETHER WITH
PROGRADE™ TRAILERING**

Sierra offers the most trailering-assistance technologies in its class.¹

ADVANCED TRAILERING TECH

A suite of available advanced technology and capability features comes together to provide an enhanced trailering experience.

SUPER CRUISE DRIVER-ASSISTANCE TECHNOLOGY WITH TRAILERING

Hands-free trailering is a reality—now you can pull your trailer with added comfort and confidence with available Super Cruise¹ driver-assistance technology for compatible roads. The system works by adjusting specific calibrations designed to account for the additional drag and increased braking distance that come with trailering.



Due to current supply-chain shortages, certain features shown have limited or late availability, or are no longer available. See the window label or a dealer regarding the features on an individual vehicle.



ADAPTIVE CRUISE CONTROL

Sierra offers available Adaptive Cruise Control¹ that can be used when trailering.

CAMERA VIEWS AND MORE

Up to 14 available camera views² including transparent trailer view, an available in-vehicle Trailering App³ and more comprise Sierra's suite of towing technologies.

ADDITIONAL SAFETY FEATURES

Sierra is engineered for safety and driver assistance with trailering in mind, including available Trailer Side Blind Zone Alert,⁴ which accounts for the length of a compatible trailer when changing lanes.

AVAILABLE IN-VEHICLE TRAILERING APP¹

- Create up to Five Defined Trailer Profiles
- Predeparture Checklists
- Trailer Light Sequence Test
- Trailer Tire Pressure and Temperature Monitoring System²
- Counter for Trailer Mileage



SMART TRAILERING

AVAILABLE myGMC MOBILE APP¹ FEATURES:

- Create and Manage Trailer Profiles
- Run Trailer Light Sequence Tests
- Reference Predeparture Checklists
- Use the Trailer Load Calculator to Determine the Combined Weight of Your Truck and Trailer
- View and Receive Alerts on Key Components of Your Trailer Such as Tire Pressure Monitoring² and Trailer Miles





CARRY THE LOAD

- Roll-Formed High-Strength Steel Bed Floor
- Spray-on Bedliner Is Available
- Large Footwells in CornerStep Rear Bumper
- 12 Tie-Downs: Three in Each Corner Rated at 500 lbs¹ per Corner
- Up to Nine Movable Accessory Upper Tie-Downs Are Available
- 120-Volt Power Outlet² Is Available
- LED Cargo Area Lamps Are Available



CONFIDENCE IN SIGHT

In Sierra, your confidence is enhanced by up to 14 available camera views¹—including Hitch View and the industry-first available transparent trailer view, which helps you virtually see right through a compatible trailer.

UP TO 14 AVAILABLE CAMERA VIEWS¹

1. TRANSPARENT TRAILER VIEW (REQUIRES COMPATIBLE CONVENTIONAL TRAILER)
2. HITCH VIEW
3. CARGO BED VIEW (WITH ZOOM VIEW AND HITCH GUIDELINE)
4. FRONT CAMERA VIEW
5. REAR CAMERA VIEW
6. SURROUND VIEW
7. FRONT TOP-DOWN VIEW
8. REAR TOP-DOWN VIEW
9. FRONT SIDE VIEW
10. REAR SIDE VIEW (WITH TRAILER BIASING) (REQUIRES COMPATIBLE CONVENTIONAL TRAILER)
11. REAR TRAILER VIEW (WITH GUIDELINES AND TRAILER ANGLE INDICATOR) (REQUIRES COMPATIBLE CONVENTIONAL TRAILER)
12. INSIDE TRAILER VIEW
13. PICTURE-IN-PICTURE SIDE VIEW
14. REAR CAMERA MIRROR





Available Rear Trailer View shown, which requires an available accessory camera and installation.

JACK-KNIFE ALERT

Included with available High Definition Surround Vision, Jack-Knife Alert tracks the position of a compatible trailer in relation to the vehicle and an alert is displayed if the front of the trailer approaches the rear of the vehicle. Based on vehicle equipment and user settings, the visual alert may be accompanied by audible or Safety Alert Seat notifications if equipped. Jack-Knife Alert is not compatible with gooseneck or fifth-wheel trailers.

Safety or driver-assistance features are no substitute for the driver's responsibility to operate the vehicle in a safe manner. The driver should remain attentive to traffic, surroundings and road conditions at all times. Visibility, weather and road conditions may affect feature performance. Read the vehicle Owner's Manual for more important feature limitations and information.



TRAILER LENGTH INDICATOR

When enabled and driving forward with the turn signal activated, the available Trailer Length Indicator displays as a red overlay twice the length of a compatible trailer to show when other vehicles are present and may interfere with a lane-change maneuver.

Trailer Length Indicator is not compatible with gooseneck or fifth-wheel trailers.

Safety or driver-assistance features are no substitute for the driver's responsibility to operate the vehicle in a safe manner. The driver should remain attentive to traffic, surroundings and road conditions at all times. Visibility, weather and road conditions may affect feature performance. Read the vehicle Owner's Manual for more important feature limitations and information.



KEEP YOUR CONNECTIONS STRONG

Three years of the OnStar® and Connected Services Premium Plan¹ are included on select Sierra 1500 models. With this plan, eligible vehicles² can enjoy the added peace of mind of the OnStar Safety & Security Plan³ and the complete suite of available connectivity features included in the Connected Vehicle Plan.⁴

ONSTAR AND CONNECTED SERVICES PREMIUM PLAN INCLUDES:

- In-Vehicle App⁵ Access (Not Available on Pro)
- In-Vehicle Wi-Fi® Hotspot Data⁶
- OnStar Guardian™ app⁷
- myGMC Mobile App⁸
- Automatic Crash Response⁹
- Emergency Services
- Crisis Assist
- Roadside Assistance¹⁰
- Stolen Vehicle Assistance¹¹
- With Google built-in¹² (Not Available on Pro)

AT4X shown with available accessories. Due to current supply-chain shortages, certain features shown have limited or late availability, or are no longer available. See the window label or a dealer regarding the features on an individual vehicle.

HELP WHEN YOU NEED IT

With 3 years of OnStar Safety and Security on most Sierra models,¹ you'll have added peace of mind knowing an Emergency Advisor² is ready to help. Whether it's a crash, a vehicle theft or an emergency situation, help is available 24/7.

The Safety & Security Plan³ includes the OnStar Guardian app,⁴ which lets you access the key OnStar safety services you depend on right from your phone. Help in a crash, assistance with a flat tire and more are available through your smartphone. Best of all, you can share OnStar Guardian with up to seven of your loved ones at no additional cost.



STAY IN COMMAND WHEREVER THE ACTION LEADS

- Wireless Apple CarPlay® Compatibility¹
Is Available
- Wireless Android Auto™ Compatibility²
Is Available
- Wireless Charging³ Is Available



Due to current supply-chain shortages, certain features shown on this spread have limited or late availability, or are no longer available. See the window label or a dealer regarding the features on an individual vehicle.



Apple CarPlay® shown.



GET THERE WITH GOOGLE BUILT-IN

With Google built-in¹ compatibility and a 3-year GMC Connected Vehicle subscription included on most Sierra trims,² you will receive a helpful, personalized and seamless way to enhance your in-vehicle experience. With Google Assistant, Google Maps and more on Google Play, you get access to hands-free help, live traffic updates, some of your favorite apps and more.





FIND YOUR TRUE COLORS



ONYX
BLACK¹



SUMMIT
WHITE²



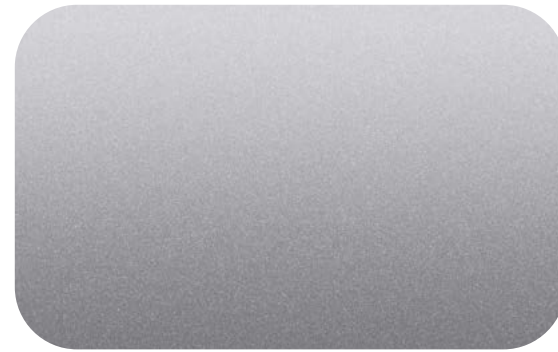
PACIFIC BLUE
METALLIC^{1, 3}



TITANIUM RUSH
METALLIC^{1, 4}



DYNAMIC BLUE
METALLIC^{1, 5}



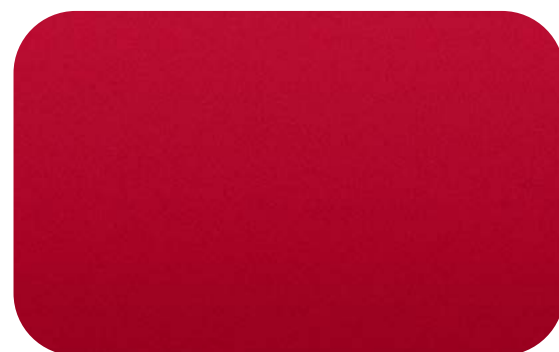
STERLING
METALLIC¹



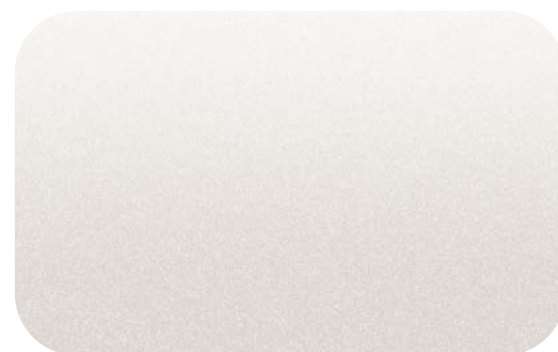
DESERT SAND
METALLIC^{1, 5}



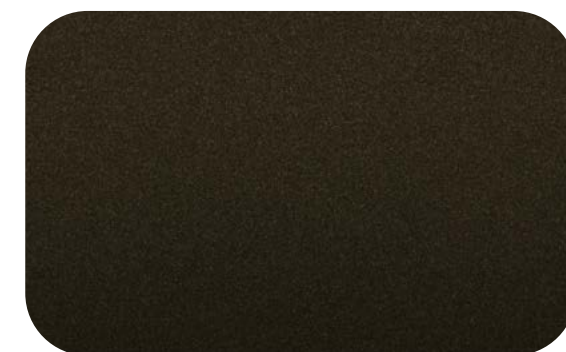
VOLCANIC RED
TINTCOAT^{1, 6}



CARDINAL
RED^{1, 7}



WHITE FROST
TRICOAT^{1, 8}

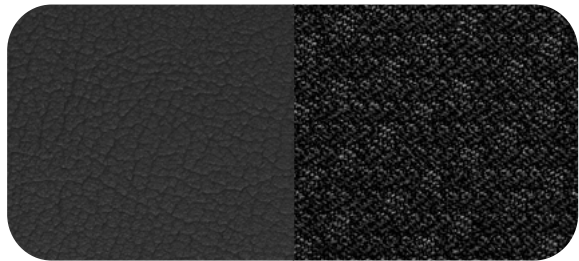


DEEP BRONZE
METALLIC^{1, 9}

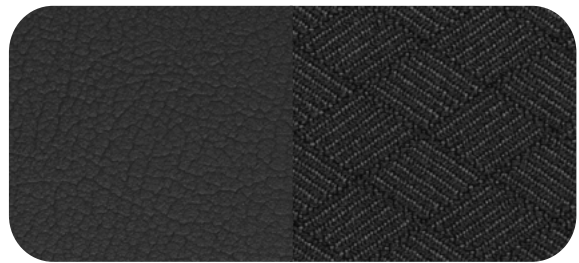




PRO



JET BLACK/
JET BLACK CLOTH

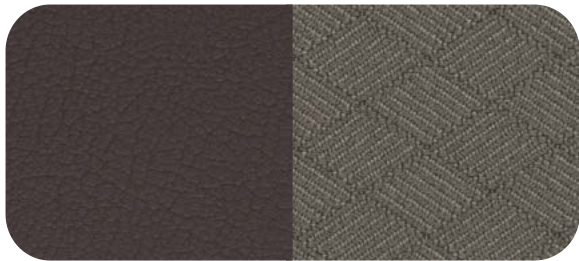


AVAILABLE JET BLACK/
JET BLACK CLOTH

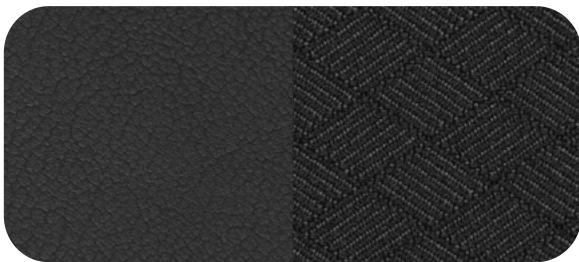


JET BLACK/
JET BLACK VINYL

SLE



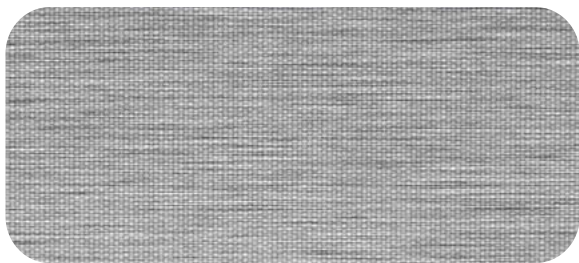
DARK WALNUT/
SLATE CLOTH



JET BLACK/
JET BLACK CLOTH

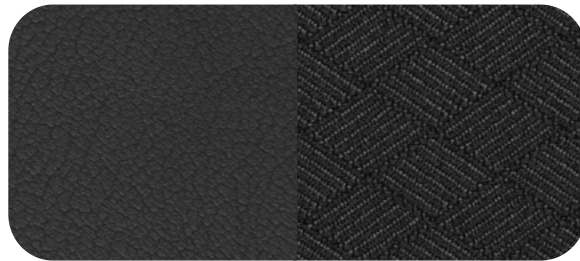


ARENITE TONE

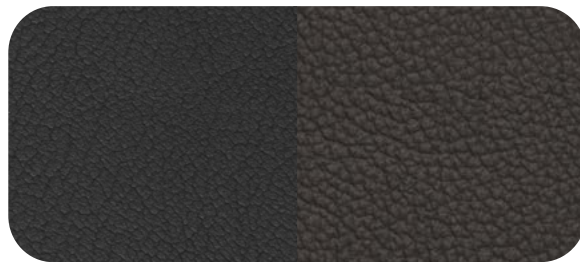


AEGIS
PATTERNED ALUMINUM

ELEVATION



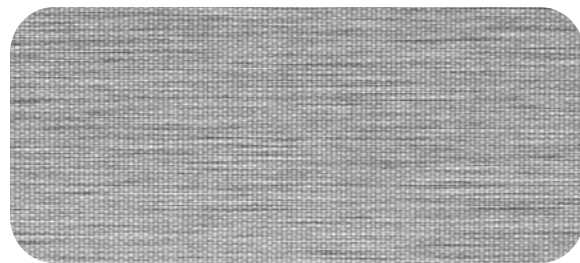
JET BLACK/
JET BLACK CLOTH



JET BLACK/
JET BLACK FRONT
LEATHER-APPOINTED

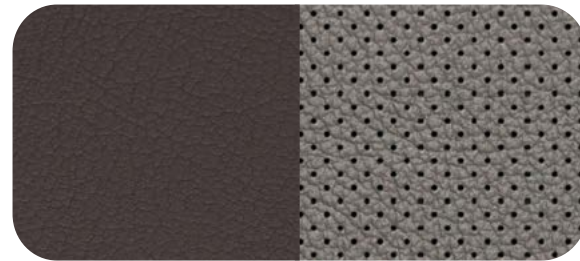


ARENITE TONE

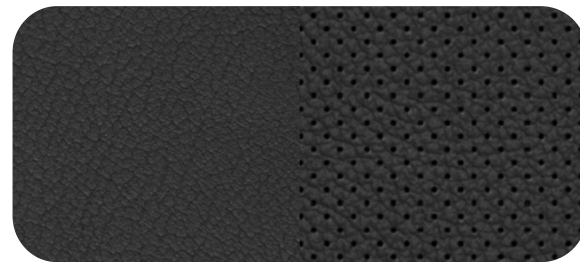


AEGIS
PATTERNED ALUMINUM

SLT



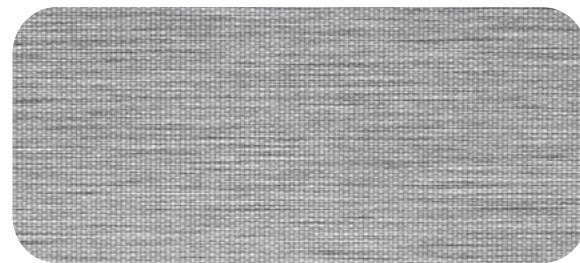
DARK WALNUT/SLATE
PERFORATED FRONT OUTBOARD
LEATHER-APPOINTED



JET BLACK/JET BLACK
PERFORATED FRONT OUTBOARD
LEATHER-APPOINTED



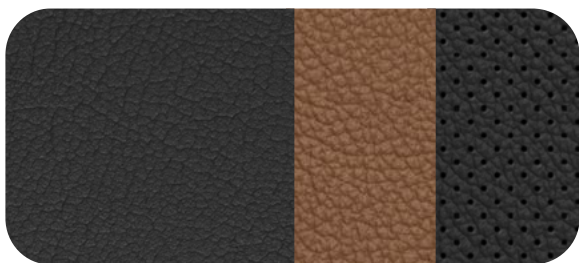
CYPRESS WOOD TONE



AEGIS
PATTERNED ALUMINUM



AT4



JET BLACK/JET BLACK PERFORATED
FRONT LEATHER SEATING SURFACES
WITH KALAHARI ACCENTS



TECHNICAL
APPEARANCE



DARK BRUSHED
ALUMINUM

AT4X



OBSIDIAN RUSH PERFORATED FRONT AND REAR
LEATHER SEATING WITH TECHNICAL-GRAIN
LEATHER ACCENTS AND RED STITCHING



VANTA ASH WOOD



DARK BRUSHED
ALUMINUM



PREMIUM MICROSUEDE

DENALI



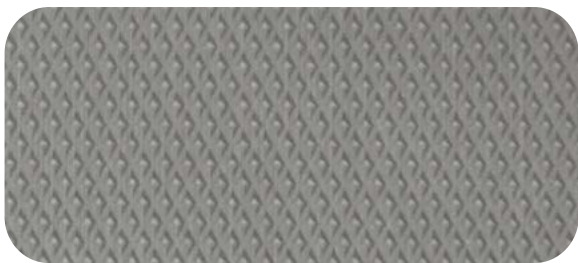
ATMOSPHERE/BROWNSTONE
FORGE PERFORATED LEATHER
SEATING SURFACES



JET BLACK/JET BLACK
FORGE PERFORATED LEATHER
SEATING SURFACES

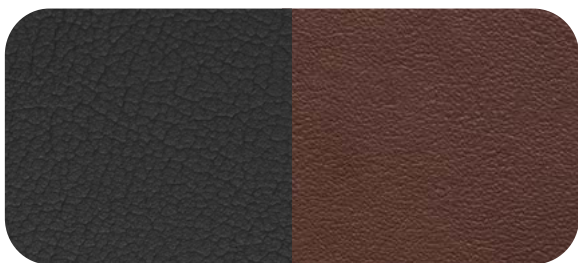


OPEN-PORE WALNUT
OMBRE WOOD



ATREIDES PATTERNED
ALUMINUM

DENALI ULTIMATE



ALPINE UMBER PERFORATED
FRONT AND REAR FULL-GRAIN
LEATHER SEATING



OPEN-PORE PALDAO WOOD
WITH HAND-BRUSHED
DARK FINISH



GEIGER PATTERNED ALUMINUM



PREMIUM MICROSUEDE



PRECISION-CRAFTED FROM THE GROUND UP



17"

17"

18"

18"

18"

18"

17" Bright Silver
Painted Steel (RD6)
Standard on Pro

17" 6-Spoke Bright
Silver Painted
Aluminum (Q5U)
Standard on SLE;
Available on Pro

18" 6-Spoke
Machined Aluminum
With Dark Gray
Metallic Accents (UHN)
Standard on SLT;
Available on Pro
and SLE

18" Machined
Aluminum With
Dark Gray
Accents (RT5)
Standard on AT4

18" High-Gloss
Black Painted
Aluminum (RQ8)
Standard on AT4X

18" 12-Spoke High-Gloss
Black Aluminum With
Laser Etching and
AEV Center Cap (Q89)
Included and only
available with AT4X
AEV Edition



PRECISION-CRAFTED FROM THE GROUND UP



20"

20" Gloss-Black Painted
Aluminum (RD3)
Standard on Elevation;
Available on Pro



20"

20" Machined
Aluminum With
Carbon Gray Metallic
Accents (NZH)
Available on AT4



20"

20" Polished Aluminum
With Technical Gray
Painted Accents (NZZ)
Available on SLE and SLT



20"

20" Multidimensional
Polished Aluminum
(RTL)
Standard on Denali



PRECISION-CRAFTED FROM THE GROUND UP



22"

22" Painted Aluminum With Machining
and Bright Chrome Inserts (SH0)
Available on Denali



22"

22" 7-Spoke Ultra-Bright
Machined Aluminum With
Bright Chrome Accents
and Dark Paint (SMR)
Standard on Denali Ultimate



PRECISION-CRAFTED FROM THE GROUND UP



22"

22" High-Gloss Black
With Multi-Spoke (SRV)
Accessory Wheel¹
Available on SLT
and Denali



22"

22" Low-Gloss Black
With Machined
Outer Spokes (SRL)
Accessory Wheel¹
Available on SLT
and Denali



22"

22" High-Gloss
Black (SGM)
Accessory Wheel¹
Available on SLT
and Denali



22"

22" Carbon Flash
Metallic (SEZ)
Accessory Wheel¹
Available on SLT
and Denali



22"

22" Polished Aluminum
(SEU) Accessory Wheel¹
Available on SLT
and Denali



22"

22" Bright Chrome
Multi-Spoke (SSW)
Accessory Wheel¹
Available on SLT
and Denali



22"

22" Bright Chrome
Split-Spoke (SSI)
Accessory Wheel¹
Available on SLT
and Denali



22"

22" 6-Spoke Low-Gloss
Black With Machined
Accents (SEV)
Accessory Wheel¹
Available on SLT
and Denali



PERSONALIZE YOUR SIERRA

GMC Accessories are a great way to personalize your Sierra—inside and out. We also offer accessories from a lineup of other renowned and proven manufacturers. Find a full selection of Sierra accessories at gmc.com/accessories.





PREMIUM ALL-WEATHER FLOOR LINERS



CENTER CONSOLE LOCKABLE STORAGE BOX



HARD FOLDING TONNEAU COVER BY REV®



OFF-ROAD HIGH-CLEARANCE STEPS



Find a full selection of Sierra accessories at gmc.com/accessories.



POWERED BY PROFESSIONAL GRADE



SIERRA 1500

CANYON

SIERRA HEAVY DUTY

HUMMER EV PICKUP

YUKON

TERRAIN

ACADIA

Due to current supply-chain shortages, certain features shown have limited or late availability, or are no longer available. See the window label or a dealer regarding the features on an individual vehicle. Sierra 1500 AT4X shown with available accessories. Canyon AT4X shown available spring 2023. Reservations for HUMMER EV are currently full.

DRIVE THE CONVERSATION

#GMCSIERRA | #DENALI | #AT4



Share your GMC experience and get in on the action.

Due to current supply-chain shortages, certain features shown on this spread have limited or late availability, or are no longer available. See the window label or a dealer regarding the features on an individual vehicle.





IMPORTANT WORDS AND LEGAL DISCLOSURES



NEW VEHICLE LIMITED WARRANTY

3-YEAR/36,000-MILE BUMPER-TO-BUMPER LIMITED WARRANTY GMC will warrant each 2023 Sierra from bumper to bumper for 3 years/36,000 miles (whichever comes first; see dealer for details), with no deductible, from the original in-service date of the vehicle, for warrantable repairs that are required as a result of defects due to materials and/or workmanship. Cosmetic corrosion resulting from defects is also covered under the Bumper-to-Bumper Limited Warranty. In addition, rust-through corrosion will be covered for 6 years/100,000 miles (whichever comes first; see dealer for details).

POWERTRAIN LIMITED WARRANTY Every 2023 GMC Sierra comes with a 5-year/60,000-mile (whichever comes first) transferable Powertrain Limited Warranty. 24/7 Roadside Assistance and Courtesy Transportation are also offered for the duration of the Powertrain Limited Warranty. Sierra 1500 Light-Duty (LD) pickups equipped with a 3.0L Duramax Turbo Diesel engine are covered by a 5-year/100,000-mile (whichever comes first) transferable Powertrain Limited Warranty. 24/7 Roadside Assistance and Courtesy Transportation are also offered for the duration of the Powertrain Limited Warranty. Please see your GMC dealer for details.

ONSTAR AND GMC CONNECTED SERVICES

Connected vehicle services vary by vehicle model and require working electrical system, cell reception and GPS signal. Requires active service plan. OnStar links to emergency services. See onstar.com for details and limitations.

GMC CERTIFIED SERVICE

To help your Sierra live up to its performance promise, GMC Certified Service—found exclusively at your GMC dealer—is there. With all the engineering excellence in Sierra, GM-trained technicians have the expertise to help care for it.

ADDITIONAL NOTES

A NOTE ON CHILD SAFETY Always use seat belts and the correct child restraint for your child's age and size, even with airbags. Even in vehicles equipped with the Passenger Sensing System, children are safer when properly secured in a rear seat in the appropriate infant, child or booster seat. Never place a rear-facing infant restraint in the front seat of any vehicle equipped with an active frontal airbag. See the Owner's Manual and the child safety seat instructions for more safety information.

TRAILERING AND OFF-ROAD DRIVING INFORMATION Please go to gmc.com and carefully review the vehicle Owner's Manual for important safety information about trailering or off-road driving in your vehicle.

FLEET ORDERS Some standard content may be deleted on fleet orders. See dealer for details.

ENGINES GMC products are equipped with engines produced by GM Powertrain or other suppliers to GM worldwide. The engines in GMC products may also be used in other GM makes and models.

GMC.COM See more of Sierra on our website: gmc.com/sierra. More photos and information; hot links to related subjects; convenient dealer locator; pricing guide; spec out your own vehicle. Or call 1-800-GMC-8782.

IMPORTANT WORDS ABOUT THIS CATALOG We have tried to make this catalog comprehensive and factual. We reserve the right, however, to make changes at any time, without notice, in prices, colors, materials, equipment, specifications, models and availability. Specifications, dimensions, measurements, ratings and other numbers in this catalog and other printed materials provided at the dealership or affixed to vehicles are approximations based on design and engineering drawings, prototypes and laboratory tests. Your vehicle may differ due to variations in manufacture and equipment. Since some information may have been updated since the time of publication, please check with your GMC dealer for complete details. GMC reserves the right to lengthen or shorten the model year for any product for any reason or to start and end model years at different times. Certain vehicle features may lose their usefulness over time due to obsolescence from technological changes. Unless otherwise noted, all claims based on GM Large Pickup segment and latest available competitive information available at time of publication. Excludes other GM vehicles.

AN IMPORTANT NOTE ABOUT ALTERATIONS AND WARRANTIES Installations or alterations to the original equipment vehicle (or chassis) as distributed by General Motors are not covered by the General Motors New Vehicle Limited Warranty. The special body company, assembler, equipment installer or upfitter is solely responsible for warranties on the body or equipment and any alterations (or any effect of the alterations) to any of the parts, components, systems or assemblies installed by GM. General Motors is not responsible for the safety or quality of design, features, materials or workmanship of any alterations by such employers.

ASSEMBLY GMC vehicles and their components are assembled or produced by different operating units of General Motors, its subsidiaries or suppliers to GM worldwide. We sometimes find it necessary to produce GMC vehicles with different or differently sourced components than originally scheduled. Since some options may be unavailable when your vehicle is assembled, we suggest you verify that your vehicle includes the equipment you ordered and that, if there were changes, they are acceptable to you.

GMMOBILITY.COM (1-800-323-9935) GM Mobility offers financial assistance for eligible adaptive equipment to make automotive travel easier for persons with disabilities or special transportation needs. To learn more about special GM Mobility offers, visit gmmobility.com.

©2023 General Motors. All rights reserved. GM, the GM logo, GMC, the slogans, emblems, vehicle model names, vehicle body designs and other marks appearing in this catalog are the trademarks and/or service marks of General Motors, its subsidiaries, affiliates or licensors. Facebook is a registered trademark of Meta Platforms, Inc. Twitter is a registered trademark of Twitter, Inc. Instagram is a registered trademark of Instagram, LLC. Sirius, XM and all related marks and logos are trademarks of SiriusXM Radio, Inc. Google, Android, Android Auto, Google Maps and other marks are trademarks of Google LLC. Apple, CarPlay, iPhone and Siri are registered trademarks of Apple, Inc.



¹Class is half-ton gasoline and diesel pickups.



**SIERRA DENALI ULTIMATE IS
THE MOST ADVANCED AND
LUXURIOUS PICKUP IN ITS CLASS¹**

Get after it on the road or the trail in the premium and capable 2023 Sierra featuring the Sierra Denali Ultimate. With robust power, bold styling and an ultra-premium interior, Sierra is engineered and crafted to exceed your expectations.



SUPER CRUISE HANDS-FREE DRIVER-ASSISTANCE TECHNOLOGY: THE NEXT GENERATION OF TRAVEL

The future starts now. Travel hands-free on more than 400,000 miles, and counting, of compatible roads in the U.S. and Canada with available Super Cruise¹ driver-assistance technology.

Engineered for a new kind of freedom, this advanced technology performs automatic hands-free lane changing to maintain your set speed or allows you to pull your trailer hands-free.



¹Automatic Lane Change and Lane Change on Demand are not available while trailering. Always pay attention while driving and when using Super Cruise. Do not use a handheld device. Requires active Super Cruise plan or trial. Terms apply. Visit gmc.com/connectivity-technology/super-cruise for compatible roads and full details.

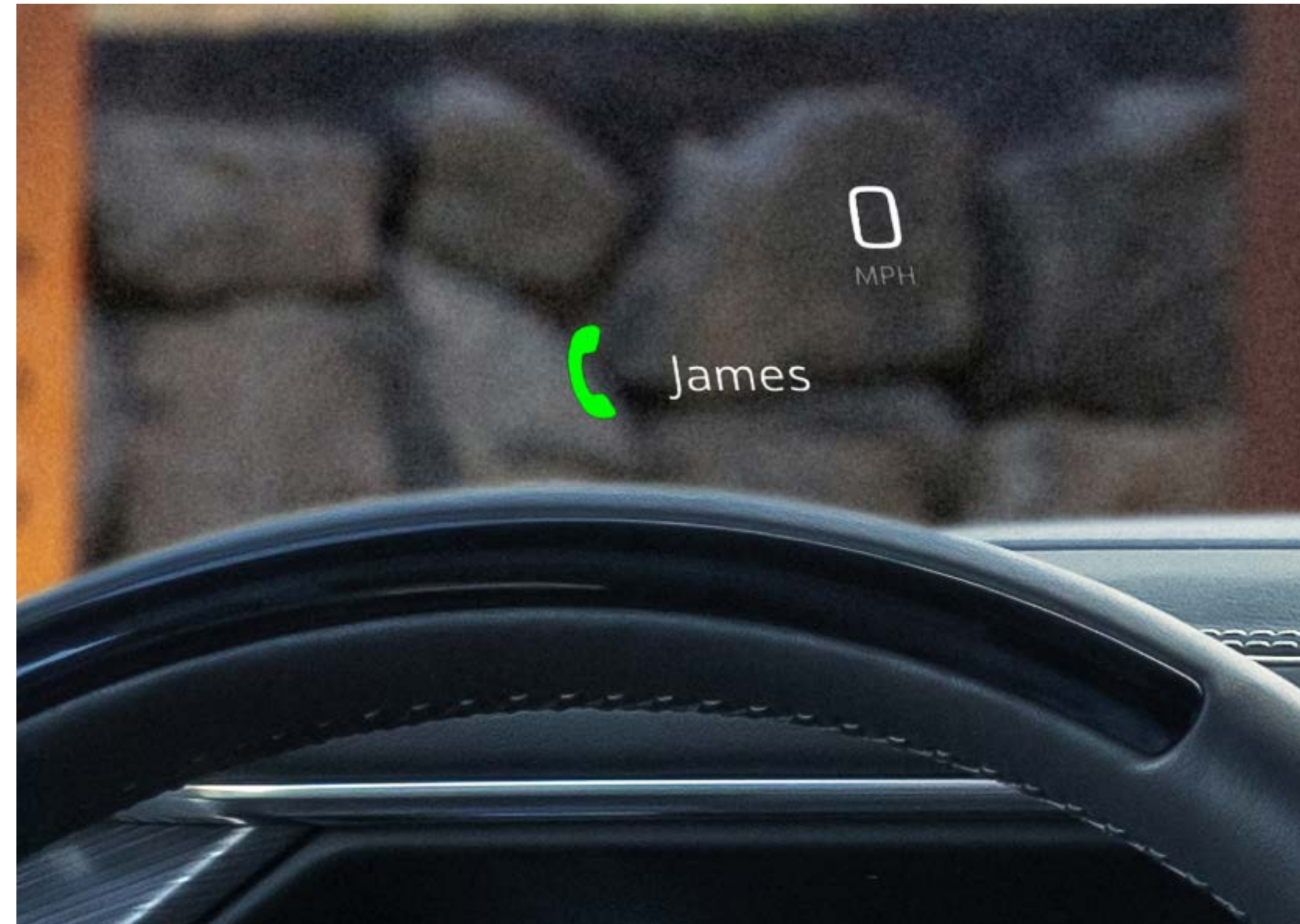




OVER 40" (DIAGONAL) OF CUSTOMIZABLE SCREENS



Available Trailer Tire Pressure Monitoring System shown requires installation of trailer tire pressure monitor sensors.



¹Class is half-ton gasoline and diesel pickups.



Inside Sierra, large, gorgeous screens enhance your driving experience, offering over 40" (diagonal) of combined driver-focused digital displays—the most in its class.¹

- 13.4" Diagonal Center Touch-Screen Is Available
- Multicolor 15" Diagonal Head-Up Display Is Available
- 12.3" Diagonal Customizable Driver Information Center Is Available

YOUR SCREENS YOUR WAY

The 13.4" diagonal GMC Infotainment System,¹ standard on SLE, Elevation, SLT, AT4, AT4X, Denali and Denali Ultimate, offers a wide range of screen combinations, features and reconfigurability, taking personalization to a whole new level.

¹Functionality varies by model. Full functionality requires compatible Bluetooth® and smartphone, and USB connectivity for some devices.



Available features shown.



SIERRA OFFERS THE PREMIUM AND CAPABLE TRUCK YOU NEED



Take on the tough backcountry with a factory-installed 2" suspension lift in **Sierra AT4**.



Next-level adventure starts with advanced capability features such as front and rear e-locking differentials in the New 2023 **Sierra AT4X**.



Rise to the upper limits of what premium and capable luxury can be in **Sierra Denali**.



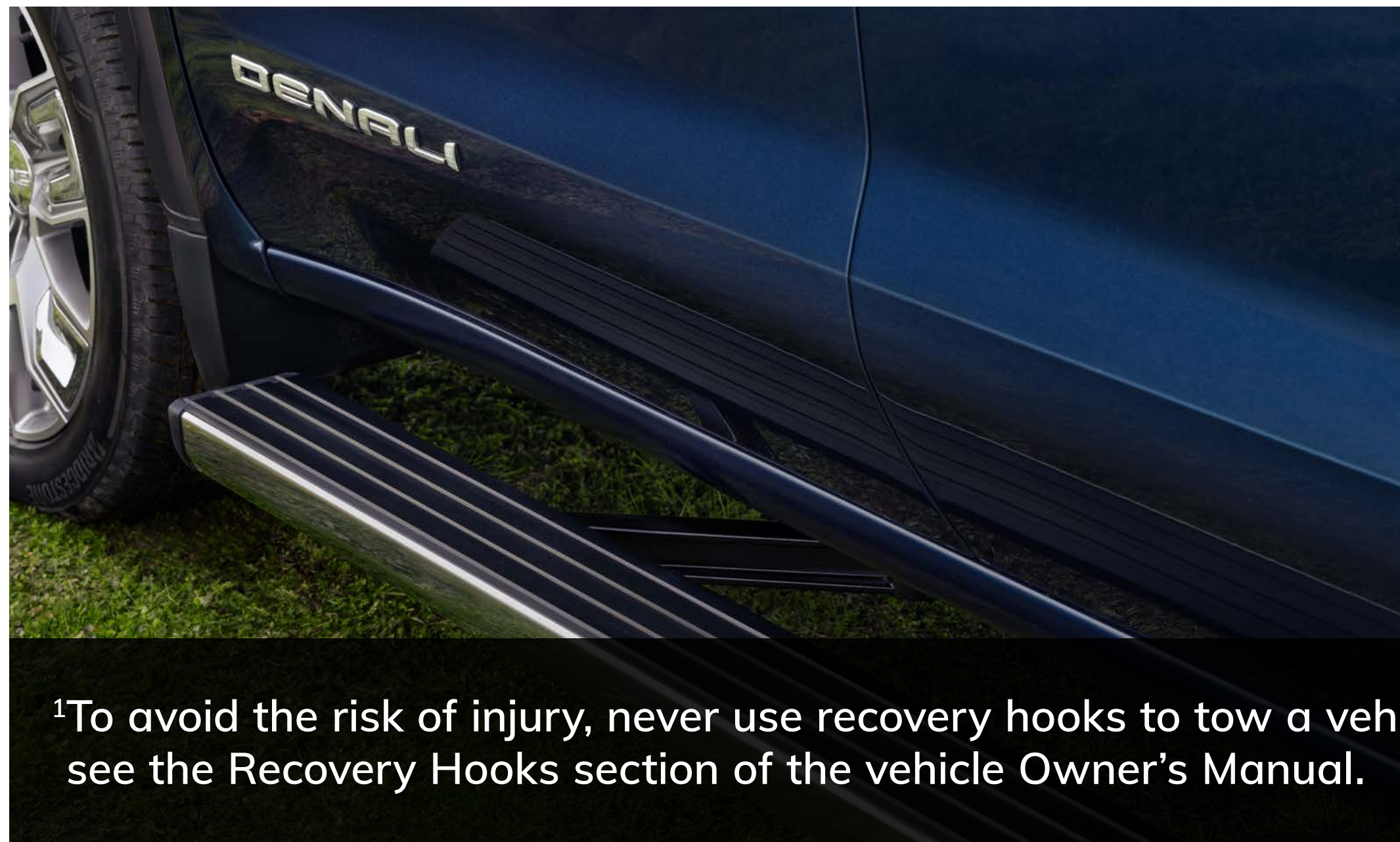
Take on the world in the most advanced and luxurious pickup in its class,¹ the 2023 **Sierra Denali Ultimate**.

¹Class is half-ton gasoline and diesel pickups.





STAND APART WITH SIGNATURE STYLING



¹To avoid the risk of injury, never use recovery hooks to tow a vehicle. For more information, see the Recovery Hooks section of the vehicle Owner's Manual.



Denali includes eye-catching features that give the vehicle its signature, standout good looks.

- Bold Front Fascia Design Includes Unique Denali Chrome Grille, Along With Exclusive Available 22" Painted Aluminum Wheels With Machining and Bright Chrome Inserts
- GMC MultiPro™ Power Assist Steps Are Available

- Chrome Vertical Front Recovery Hooks¹
- Dual-Projector LED Headlamps
- GMC Daytime Running Lamps With Signature C-Shape Design





FIRST-CLASS ALL THE WAY

- Spacious Interior Features Best-in-Class¹ Crew Cab Front Head and Leg Room
- Perforated Forge Leather Seating Surfaces With Contrasting Stitch Pattern
- Patterned Aluminum Trim and Chrome Accents
- Premium Instrument Panel and Door Trim With Chrome and Authentic Open-Pore Walnut Wood Detailing

- Embroidered Denali Logo on Front Seatbacks
- 10-Way Power Driver and Front-Passenger Seats, Including Two-Way Lumbar Control, Power-Rake/-Telescoping Steering Column and Driver-Seat Memory
- Etched Stainless-Steel Speaker Grille Details

¹Class is half-ton gasoline and diesel pickups.





¹Safety or driver-assistance features are no substitute for the driver's responsibility to operate the vehicle in a safe manner. Read the vehicle Owner's Manual for important feature limitations and information. Some camera views require available accessory camera and installation. Not compatible with all trailers. See your dealer for details. ²Google built-in services are subject to limitations, and availability may vary by vehicle, infotainment system and location. Select service plan required. Certain Google actions and functionality may require account linking. User terms and privacy statements apply. Google, Google Play and Google Maps are trademarks of Google LLC. ³Requires properly equipped 2023 Sierra. Includes 3-year trial of Connected Vehicle from time of online enrollment by dealer. Services subject to acceptance of terms and limitations. Data plans offered by AT&T®. Certain services require working electrical system, cell reception and GPS signal. Offer transferable. Offer subject to change. See onstar.com for details. Availability subject to change. ⁴Safety or driver-assistance features are no substitute for the driver's responsibility to operate the vehicle in a safe manner. Read the vehicle Owner's Manual for important feature limitations and information.

SIERRA DENALI FEATURES ADVANCED TECH:

- Up to 14 Available Camera Views,¹ Including Transparent Trailer View
- Bose® Audio System With Richbass Woofer
- Rainsense Wipers
- 12.3" Diagonal Reconfigurable Driver Information Center
- 13.4" Diagonal Customizable Center Touch-Screen
- With Google built-in Compatibility,² With 3-Year GMC Connected Vehicle³ Subscription Included
- Multicolor 15" Diagonal Head-Up Display and Rear Camera Mirror⁴ Are Available



SIERRA DENALI ULTIMATE: THE MOST ADVANCED AND LUXURIOUS PICKUP IN ITS CLASS¹

Sierra Denali Ultimate is the ultimate expression of signature Denali style, luxury and technological innovation.

¹Class is half-ton gasoline and diesel pickups.





SIERRA DENALI ULTIMATE IS THE APEX OF PROFESSIONAL GRADE



¹Class is half-ton gasoline and diesel pickups. ²Safety or driver-assistance features are no substitute for the driver's responsibility to operate the vehicle in a safe manner. Read the vehicle Owner's Manual for important feature limitations and information. Some camera views require available accessory camera and installation. Not compatible with all trailers. See your dealer for details. ³Non-GM warranty. Limited warranty by KICKER®, 3 years/36,000 miles, whichever comes first. For more information, contact your dealer.

SIERRA DENALI ULTIMATE FEATURES:

- Over 40" (Diagonal) of Combined Driver-Focused Digital Displays—the Most in Its Class¹
- Up to 14 Available Camera Views,² Including Transparent Trailer View
- World's First Six-Function MultiPro Tailgate With KICKER®³ Audio System
- CarbonPro™ Carbon-Fiber Composite Bed Is Available

TURN HEADS WITH ULTIMATE STYLE

SIERRA DENALI ULTIMATE EXTERIOR FEATURES:

- Dual-Projector LED Headlamps and Daytime Running Lamps With Fade-On/Fade-Off Animated Lighting Sequences
- Signature Denali Grille Finished in Exclusive Vader Chrome
- Vader Chrome GMC Badging
- Unique Denali Ultimate Fender Badging
- Exclusive 22" 7-Spoke Ultra-Bright Machined Aluminum Wheels With Bright Chrome Accents and Dark Paint
- GMC MultiPro Power Assist Steps
- World's First Six-Function MultiPro Tailgate with KICKER®¹ Audio System
- CarbonPro Carbon-Fiber Composite Bed Is Available



¹Non-GM warranty. Limited warranty by KICKER®, 3 years/36,000 miles, whichever comes first.
For more information, contact your dealer.



TAKING PREMIUM TO EXCITING PLACES

SIERRA DENALI ULTIMATE INTERIOR FEATURES:

- Refined Alpine Umber Interior With Full-Grain Leather Seating and Double Helix, Plaited Contrast Stitching
- Heated and Ventilated Best-in-Class¹ 16-Way Power Front Seats With Massaging Feature
- Exclusive Denali Ultimate Metal Badging on Front Seatbacks and Doors
- Authentic Open-Pore Paldao Wood-Accented Instrument Panel and Doors
- Topographical Map Patterns of Mt. Denali's Summit Embossed and Laser-Etched Across the Interior
- Premium Microsuede Headliner, Sun Visors and Pillars
- Over 40" (Diagonal) of Combined Driver-Focused Digital Displays—the Most in Its Class¹

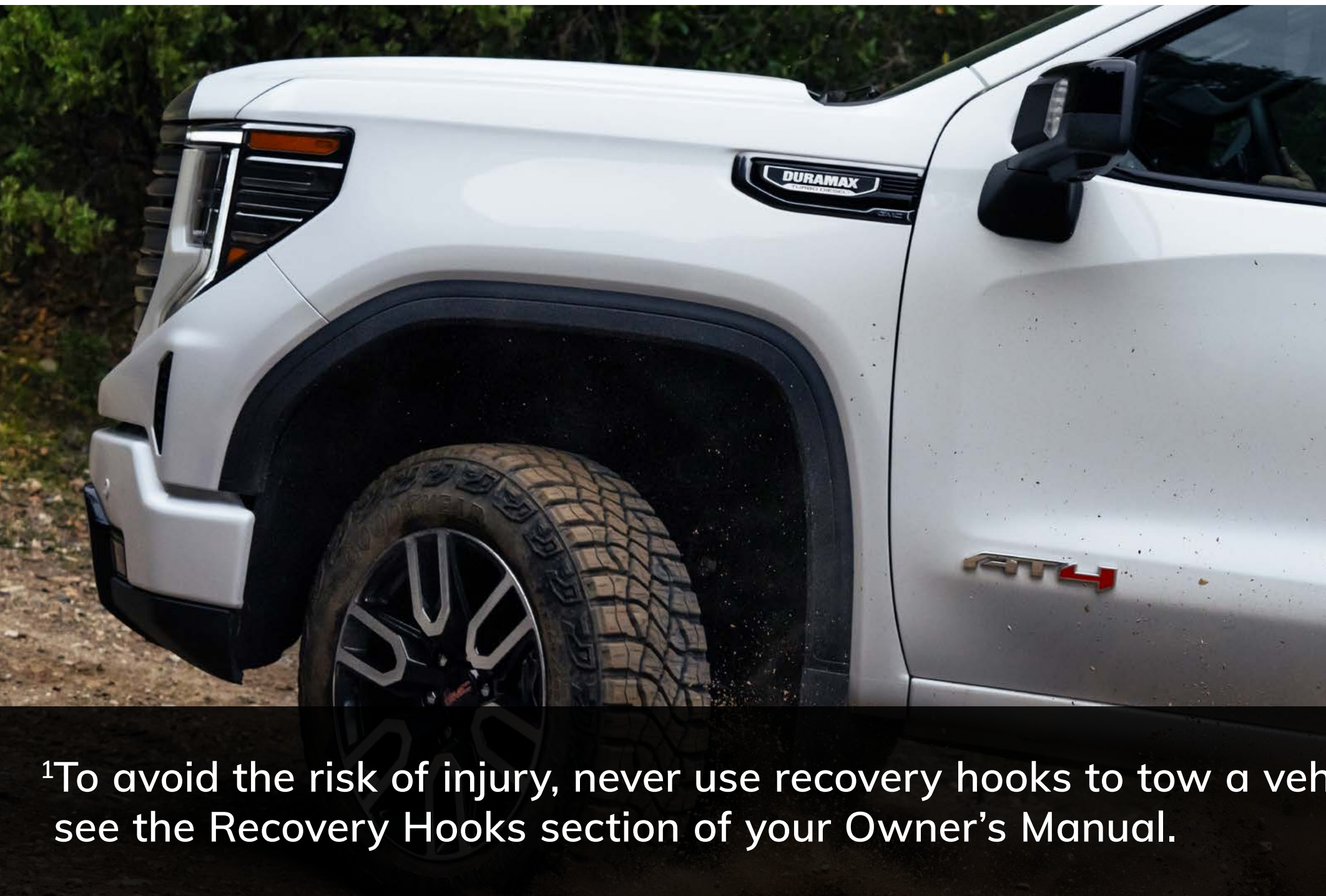


¹Class is half-ton gasoline and diesel pickups.





EXPLORE BEYOND THE BOUNDARIES: SIERRA AT4



¹To avoid the risk of injury, never use recovery hooks to tow a vehicle. For more information, see the Recovery Hooks section of your Owner's Manual.



Due to current supply-chain shortages, certain features shown have limited or late availability, or are no longer available. See the window label or a dealer regarding the features on an individual vehicle.

- Factory-Installed 2" Suspension Lift
- 2-Speed AutoTrac Transfer Case, Automatic-Locking Rear Differential and Skid Plates
- Off-Road-Tuned Rancho® Monotube Shock Absorbers

- High-Clearance Off-Road Steps Are Available
- Distinct Exterior Design With Black Chrome Accents
- Red Vertical Recovery Hooks¹

- Off-Road Mud Terrain-Rated Goodyear® Wrangler Tires
- 3.0L Duramax Turbo Diesel Engine Is Standard
- 6.2L Gas V8 Engine Is Available



¹Safety or driver-assistance features are no substitute for the driver's responsibility to operate the vehicle in a safe manner. Read the vehicle Owner's Manual for important feature limitations and information.

ADVENTURE WILL NEVER BE THE SAME

- Premium AT4 Interior in Jet Black With Kalahari Accents
- Premium All-Weather Floor Liners With Removable Carpet Inserts
- Rainsense Wipers
- 12.3" Diagonal Reconfigurable Driver Information Center
- 13.4" Diagonal Customizable Center Touch-Screen
- Multicolor 15" Diagonal Head-Up Display and Rear Camera Mirror¹ Are Available

Due to current supply-chain shortages, certain features shown have limited or late availability, or are no longer available. See the window label or a dealer regarding the features on an individual vehicle.



NEW 2023 SIERRA AT4X FEATURES:

- Front and Rear Electronic-Locking Differentials, a Combination Not Offered on Any Competitor in Its Class¹
- Advanced Off-Road Suspension With Multimatic™ DSSV Dampers
- World's First Six-Function MultiPro Tailgate with KICKER®² Audio System

ULTRA-PREMIUM INTERIOR FEATURES INCLUDE:

- Exclusive Obsidian Rush Interior With Full-Grain Leather Seats
- Technical-Grain Leather-Accented Seats and Door Panels
- Premium Leather-Trimmed Instrument Panel and Door Panels Accented With Black-Finished Authentic Vanta Ash Wood Trim

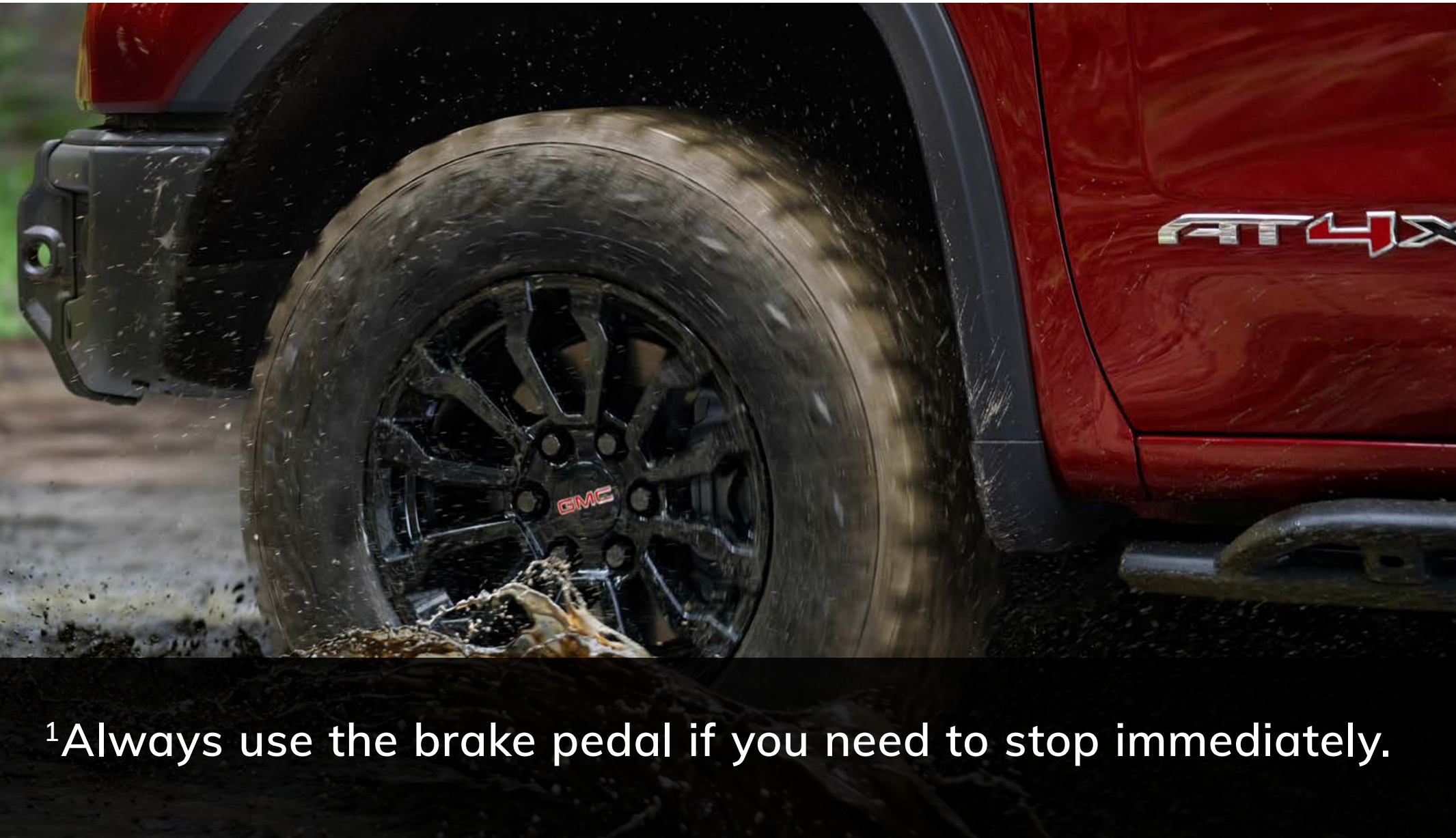
- Over 40" (Diagonal) of Combined Driver-Focused Digital Displays—the Most in Its Class³

¹Class is half-ton gasoline and diesel pickups. Excludes other GM vehicles. ²Non-GM warranty. Limited warranty by KICKER®, 3 years/36,000 miles, whichever comes first. For more information, contact your dealer. ³Class is half-ton gasoline and diesel pickups.





GO BEYOND THE LIMITS WITH ADVANCED OFF-ROAD CAPABILITY



¹Always use the brake pedal if you need to stop immediately.

AT4X FEATURES:

- Specific Off-Road Chassis and Tuning
- Terrain Mode, Ideal for Low-Speed, Off-Road Conditions. It Provides Extreme Control and Is Precision-Enabled for One-Pedal¹ Rock Crawling, Using Only the Accelerator.
- Multimatic DSSV Dampers, Featuring Three Separate Spool Valves to Control Damping and Three Connected Chambers for Fluid Flow
- Uniquely Tuned Springs to Increase Maximum Front and Rear Suspension Travel
- Available Accessory Rocker Protection
- Protected Dual-Outlet Exhaust
- Front and Rear Electronic-Locking Differentials
- Unique 18" Wheels With High-Gloss Black Finish and New Larger 33" Goodyear Wrangler Territory Mud-Terrain Tires
- Ultra-High-Strength Boron Steel Front Approach Skid Plate and Large Steel Transfer Case Skid Plate



EXPLORE THE ULTRA-PREMIUM INTERIOR

The New 2023 AT4X features a luxurious, athletic Obsidian Rush interior designed to let you explore beyond the boundaries of the road in ultra-premium style. AT4X also features heated and ventilated best-in-class¹ 16-way power front seats with a massage feature, making all your travels first-class.

¹Class is half-ton gasoline and diesel pickups.



Due to current supply-chain shortages, certain features shown have limited or late availability, or are no longer available. See the window label or a dealer regarding the features on an individual vehicle.



REFINED INTERIOR DETAILS



¹Class is half-ton gasoline and diesel pickups.



NEW 2023 AT4X INTERIOR FEATURES:

- Refined Obsidian Rush Interior With Full-Grain Leather Seats, Red and White Double-Needle Stitching and Technical-Grain Leather Accents
- Metal AT4X Badging on Front Seatbacks and Doors
- Premium Leather-Trimmed Instrument Panel and Door Panels Accented With Black-Finished Authentic Vanta Ash Wood Trim
- Premium Microsuede Headliner, Sun Visors and Pillars

- Etched Stainless-Steel Speaker Grille Details
- Best-in-Class¹ 16-Way Power-Adjustable Front Seats With Massage Feature



MAKE THINGS HAPPEN

SIERRA SLT FEATURES:

- Cargo Bed Volume¹: 62.9 cu. ft. (Short Bed) or 71.7 cu. ft. (Standard Bed)
- CornerStep Rear Bumper
- 5.3L V8 Engine Paired With a 10-Speed Automatic Transmission Is Standard
- World's First Six-Function GMC MultiPro Tailgate² Is Available
- 6.2L Gas V8 and 3.0L Duramax Turbo Diesel Engines Are Available
- X31 Off-Road Package Is Available



Due to current supply-chain shortages, certain features shown have limited or late availability, or are no longer available. See the window label or a dealer regarding the features on an individual vehicle.

¹Cargo and load capacity limited by weight and distribution. ²Feature may not be available on certain vehicles. See dealer for feature availability.





TOUGH AND ELEVATED INTERIOR

- Cloth Interior and 40/20/40 Front Bench Seat
- Customizable 13.4" Diagonal Center Touch-Screen and a 12.3" Diagonal Configurable Driver Information Center

- Best-in-Class¹ Crew Cab Front Head and Leg Room
- Heated Driver and Front Outboard Passenger Seats

Due to current supply-chain shortages, certain features shown have limited or late availability, or are no longer available. See the window label or a dealer regarding the features on an individual vehicle.

¹Class is half-ton gasoline and diesel pickups.





RUGGED YET REFINED

¹Feature may not be available on certain vehicles. See dealer for feature availability. The system wirelessly charges one compatible mobile device. Some phones have built-in wireless charging technology and others require a special adapter/back cover. To check for phone or other device compatibility, see my.gmc.com/learn or consult your carrier.



The available Elevation Premium Package includes first-class Jet Black leather-appointed front bucket seats, tech-savvy features such as available wireless charging¹ and more.

Due to current supply-chain shortages, certain features shown have limited or late availability, or are no longer available. See the window label or a dealer regarding the features on an individual vehicle.



¹Safety or driver-assistance features are no substitute for the driver's responsibility to operate the vehicle in a safe manner. Read the vehicle Owner's Manual for important feature limitations and information.

GO FORTH WITH CONFIDENCE

GMC PRO SAFETY¹ IS STANDARD ON 2023 SIERRA MODELS AND INCLUDES:

- Lane Keep Assist With Lane Departure Warning
- Automatic Emergency Braking
- Forward Collision Alert
- Following Distance Indicator
- Front Pedestrian Braking
- IntelliBeam—Auto High Beams



MULTIFACETED, MULTIFUNCTIONAL INNOVATION

The available MultiPro Tailgate¹ adds even more functionality to Sierra.

AVAILABLE MULTIPRO ACCESSORIES:

- Take Your Music Outdoors With the Accessory MultiPro Audio System by KICKER^{®2}—Standard on AT4X and Denali Ultimate and Available on SLE, Elevation, SLT, AT4 and Denali
- Illuminate Your Destination With Available Dealer-Installed Accessory LED Lighting

¹Feature may not be available on certain vehicles. See dealer for feature availability.

²Non-GM warranty. Limited warranty by KICKER[®], 3 years/36,000 miles, whichever comes first.
For more information, contact your dealer.





READY, WILLING AND INCREDIBLY ABLE

Make it happen with Sierra's impressive capability with up to 13,200 lbs¹ of max trailering (8,800 lbs¹ as shown). Sierra offers a choice of available robust engines to give you the power to take on the open road or the trail to get the job done.



¹13,200-lb rating requires a properly equipped Double Cab 2WD model with available 3.0L Duramax Turbo Diesel engine, available Max Trailering Package and available 20" wheels and tires. 8,800 lbs as shown requires a properly equipped Crew Cab short bed 4WD model with 6.2L V8 engine. Maximum trailering ratings are intended for comparison purposes only. Before you buy a vehicle or use it for trailering, carefully review the trailering section of the Owner's Manual. The trailering capacity of your specific vehicle may vary. The weight of passengers, cargo and options or accessories may reduce the amount you can trailer.



3.0L DURAMAX TURBO DIESEL ENGINE

- 305 Horsepower
- 495 lb-ft of Torque
- 10-Speed Automatic Transmission
- Active Thermal Management
- EPA-Estimated 24 mpg City/29 mpg Highway (2WD),
With a Maximum Highway Range of 638 Miles¹ per Tank
- EPA-Estimated 22 mpg City/27 mpg Highway (4WD),
With a Maximum Highway Range of 648 Miles¹ per Tank
- EPA-Estimated 21 mpg City/23 mpg Highway (4WD With Mud-Terrain
Tires), With a Maximum Highway Range of 552 Miles¹ per Tank
- Standard on AT4 (Not Available on AT4X)
- Available on SLE, Elevation, SLT, Denali and Denali Ultimate



¹Based on EPA-estimated highway mpg and fuel tank capacity. Your range may be less.

Due to current supply-chain shortages, certain features shown have limited or late availability, or are no longer available. See the window label or a dealer regarding the features on an individual vehicle.



¹Class is half-ton gasoline and diesel pickups.



**PULL IT ALL TOGETHER WITH
PROGRADE™ TRAILERING**

Sierra offers the most trailering-assistance technologies in its class.¹

ADVANCED TRAILERING TECH

A suite of available advanced technology and capability features comes together to provide an enhanced trailering experience.

SUPER CRUISE DRIVER-ASSISTANCE TECHNOLOGY WITH TRAILERING

Hands-free trailering is a reality—now you can pull your trailer with added comfort and confidence with available Super Cruise¹ driver-assistance technology for compatible roads. The system works by adjusting specific calibrations designed to account for the additional drag and increased braking distance that come with trailering.

¹Automatic Lane Change and Lane Change on Demand are not available while trailering. Always pay attention while driving and when using Super Cruise. Do not use a handheld device. Requires active Super Cruise plan or trial. Terms apply. Visit gmc.com/connectivity-technology/super-cruise for compatible roads and full details.

Due to current supply-chain shortages, certain features shown have limited or late availability, or are no longer available. See the window label or a dealer regarding the features on an individual vehicle.





¹Safety or driver-assistance features are no substitute for the driver's responsibility to operate the vehicle in a safe manner. Read the vehicle Owner's Manual for important feature limitations and information. ²Safety or driver-assistance features are no substitute for the driver's responsibility to operate the vehicle in a safe manner. Read the vehicle Owner's Manual for important feature limitations and information. Some camera views require available accessory camera and installation. Not compatible with all trailers. See your dealer for details. ³App functionality and features vary with vehicle equipment and trim level. Data connection may be required. Some features require active service plan and working electrical system. Terms and limitations apply. ⁴Side Blind Zone Alert and Rear Cross Traffic Alert and related features may not be available on all vehicles. See dealer for feature availability, or the window label for the features on a specific vehicle. Safety or driver-assistance features are no substitute for the driver's responsibility to operate the vehicle in a safe manner. Read the vehicle Owner's Manual for important feature limitations and information.

ADAPTIVE CRUISE CONTROL

Sierra offers available Adaptive Cruise Control¹ that can be used when trailering.

CAMERA VIEWS AND MORE

Up to 14 available camera views² including transparent trailer view, an available in-vehicle Trailering App³ and more comprise Sierra's suite of towing technologies.

ADDITIONAL SAFETY FEATURES

Sierra is engineered for safety and driver assistance with trailering in mind, including available Trailer Side Blind Zone Alert,⁴ which accounts for the length of a compatible trailer when changing lanes.

AVAILABLE IN-VEHICLE TRAILERING APP¹

- Create up to Five Defined Trailer Profiles
- Predeparture Checklists
- Trailer Light Sequence Test
- Trailer Tire Pressure and Temperature Monitoring System²
- Counter for Trailer Mileage



¹App functionality and features vary with vehicle equipment and trim level. Data connection may be required. Some features require active service plan and working electrical system. Terms and limitations apply.

²Requires available Trailer Tire Pressure Monitoring System and installation of trailer tire pressure monitor sensors.

SMART TRAILERING

AVAILABLE myGMC MOBILE APP¹ FEATURES:

- Create and Manage Trailer Profiles
- Run Trailer Light Sequence Tests
- Reference Predeparture Checklists
- Use the Trailer Load Calculator to Determine the Combined Weight of Your Truck and Trailer
- View and Receive Alerts on Key Components of Your Trailer Such as Tire Pressure Monitoring² and Trailer Miles



¹Available on select Apple® and Android™ devices. Service availability, features and functionality vary by vehicle, device and the plan you are enrolled in. Terms apply. Device data connection required. See onstar.com for details and limitations.

²Requires available Trailer Tire Pressure Monitoring System and installation of trailer tire pressure monitor sensors.





¹Cargo and load capacity limited by weight and distribution.
²Feature may not be available on certain vehicles. See dealer for feature availability.



CARRY THE LOAD

- Roll-Formed High-Strength Steel Bed Floor
- Spray-on Bedliner Is Available
- Large Footwells in CornerStep Rear Bumper
- 12 Tie-Downs: Three in Each Corner Rated at 500 lbs¹ per Corner
- Up to Nine Movable Accessory Upper Tie-Downs Are Available
- 120-Volt Power Outlet² Is Available
- LED Cargo Area Lamps Are Available



CONFIDENCE IN SIGHT

In Sierra, your confidence is enhanced by up to 14 available camera views¹—including Hitch View and the industry-first available transparent trailer view, which helps you virtually see right through a compatible trailer.

¹Safety or driver-assistance features are no substitute for the driver's responsibility to operate the vehicle in a safe manner. Read the vehicle Owner's Manual for important feature limitations and information. Some camera views require available accessory camera and installation. Not compatible with all trailers. See your dealer for details.

UP TO 14 AVAILABLE CAMERA VIEWS¹

1. TRANSPARENT TRAILER VIEW (REQUIRES COMPATIBLE CONVENTIONAL TRAILER)
2. HITCH VIEW
3. CARGO BED VIEW (WITH ZOOM VIEW AND HITCH GUIDELINE)
4. FRONT CAMERA VIEW
5. REAR CAMERA VIEW
6. SURROUND VIEW
7. FRONT TOP-DOWN VIEW
8. REAR TOP-DOWN VIEW
9. FRONT SIDE VIEW
10. REAR SIDE VIEW (WITH TRAILER BIASING) (REQUIRES COMPATIBLE CONVENTIONAL TRAILER)
11. REAR TRAILER VIEW (WITH GUIDELINES AND TRAILER ANGLE INDICATOR) (REQUIRES COMPATIBLE CONVENTIONAL TRAILER)
12. INSIDE TRAILER VIEW
13. PICTURE-IN-PICTURE SIDE VIEW
14. REAR CAMERA MIRROR



¹Safety or driver-assistance features are no substitute for the driver's responsibility to operate the vehicle in a safe manner. Read the vehicle Owner's Manual for important feature limitations and information. Some camera views require available accessory camera and installation. Not compatible with all trailers. See your dealer for details.



¹Connected vehicle services vary by vehicle model and require active service plan, working electrical system, cell reception and GPS signal. OnStar links to emergency services. See onstar.com for details and limitations. ²Required on certain vehicles built after June 2022, and standard on certain vehicles built after August 31, 2022 (excludes select Sierra Pro models). ³OnStar plan, working electrical system, cell reception and GPS signal required. OnStar links to emergency services. See onstar.com for details and limitations. ⁴Connected Vehicle Plan does not include emergency or security services. Service varies with conditions and location. Data plans provided by AT&T®. See onstar.com for details and limitations. ⁵Available on select GM vehicles with compatible hardware. Third-party trademarks are the property of their respective third-party owners and used under agreement. Requires active service plan and paid AT&T vehicle data plan. ⁶Service varies with conditions and location. Requires active service plan and paid AT&T data plan. See onstar.com for details and limitations. ⁷U.S. and Canada only. Available on select Apple® and Android devices. Mobile Crash Response services are intended for use in vehicles only and can connect automatically on Android devices only. Service coverage varies with conditions and location. Service availability, features and functionality vary by device and software version. Device permissions are required for app to operate properly. OnStar links to emergency services. Device and app may not transmit all crash data. See onstar.com for details and limitations. ⁸Available on select Apple® and Android™ devices. Service availability, features and functionality vary by vehicle, device and the plan you are enrolled in. Terms apply. Device data connection required. See onstar.com for details and limitations. ⁹Automatic Crash Response may not transmit all crash data. ¹⁰Roadside services provided by Allstate Roadside Services for vehicles only. Limitations and restrictions apply. ¹¹Stolen Vehicle Assistance requires armed GM factory-installed theft-deterrent system, contact method on file and enrollment to receive alerts. Additional messaging and data rates may apply. Services are intended to assist with vehicle recovery and do not prevent theft or protect against damage or loss. ¹²Google built-in services are subject to limitations, and availability may vary by vehicle, infotainment system and location. Select service plan required. Certain Google actions and functionality may require account linking. User terms and privacy statements apply. Google, Google Play and Google Maps are trademarks of Google LLC.

KEEP YOUR CONNECTIONS STRONG

Three years of the OnStar® and Connected Services Premium Plan¹ are included on select Sierra 1500 models. With this plan, eligible vehicles² can enjoy the added peace of mind of the OnStar Safety & Security Plan³ and the complete suite of available connectivity features included in the Connected Vehicle Plan.⁴

ONSTAR AND CONNECTED SERVICES PREMIUM PLAN INCLUDES:

- In-Vehicle App⁵ Access (Not Available on Pro)
- In-Vehicle Wi-Fi® Hotspot Data⁶
- OnStar Guardian™ app⁷
- myGMC Mobile App⁸
- Automatic Crash Response⁹
- Emergency Services
- Crisis Assist
- Roadside Assistance¹⁰
- Stolen Vehicle Assistance¹¹
- With Google built-in¹² (Not Available on Pro)

AT4X shown with available accessories. Due to current supply-chain shortages, certain features shown have limited or late availability, or are no longer available. See the window label or a dealer regarding the features on an individual vehicle.

HELP WHEN YOU NEED IT

With 3 years of OnStar Safety and Security on most Sierra models,¹ you'll have added peace of mind knowing an Emergency Advisor² is ready to help. Whether it's a crash, a vehicle theft or an emergency situation, help is available 24/7.

The Safety & Security Plan³ includes the OnStar Guardian app,⁴ which lets you access the key OnStar safety services you depend on right from your phone. Help in a crash, assistance with a flat tire and more are available through your smartphone. Best of all, you can share OnStar Guardian with up to seven of your loved ones at no additional cost.



¹Required on certain vehicles built after June 2022, and standard on certain vehicles built after August 31, 2022 (excludes select Sierra Pro models). ²OnStar Emergency Advisors are certified by the International Academies of Emergency Dispatch. ³OnStar plan, working electrical system, cell reception and GPS signal required. OnStar links to emergency services. Not all vehicles may transmit all crash data. See onstar.com for details and limitations. ⁴U.S. and Canada only. Available on select Apple® and Android devices. Mobile Crash Response services are intended for use in vehicles only and can connect automatically on Android devices only. Service coverage varies with conditions and location. Service availability, features and functionality vary by device and software version. Device permissions are required for app to operate properly. OnStar links to emergency services. Device and app may not transmit all crash data. See onstar.com for details and limitations.

STAY IN COMMAND WHEREVER THE ACTION LEADS

- Wireless Apple CarPlay® Compatibility¹
Is Available
- Wireless Android Auto™ Compatibility²
Is Available
- Wireless Charging³ Is Available



Due to current supply-chain shortages, certain features shown on this spread have limited or late availability, or are no longer available. See the window label or a dealer regarding the features on an individual vehicle.



¹Vehicle user interface is a product of Apple® and its terms and privacy statements apply. Requires compatible iPhone® and data plan rates apply. Apple CarPlay, Siri, iPhone and Apple Music are trademarks of Apple, Inc., registered in the U.S. and other countries. ²To wirelessly use Android Auto on your car display, you need a compatible Android smartphone with an active data plan. You can check which smartphones are compatible at g.co/androidauto/requirements. ³Feature may not be available on certain vehicles. See dealer for feature availability. The system wirelessly charges one compatible mobile device. Some phones have built-in wireless charging technology and others require a special adapter/back cover. To check for phone or other device compatibility, see my.gmc.com/learn or consult your carrier.

Apple CarPlay® shown.



GET THERE WITH GOOGLE BUILT-IN

With Google built-in¹ compatibility and a 3-year GMC Connected Vehicle subscription included on most Sierra trims,² you will receive a helpful, personalized and seamless way to enhance your in-vehicle experience. With Google Assistant, Google Maps and more on Google Play, you get access to hands-free help, live traffic updates, some of your favorite apps and more.



¹Google built-in services are subject to limitations, and availability may vary by vehicle, infotainment system and location. Select service plan required. Certain Google actions and functionality may require account linking. User terms and privacy statements apply. Google, Google Play and Google Maps are trademarks of Google LLC. ²Excludes Sierra Pro.





FIND YOUR TRUE COLORS



ONYX
BLACK¹



SUMMIT
WHITE²



PACIFIC BLUE
METALLIC^{1, 3}



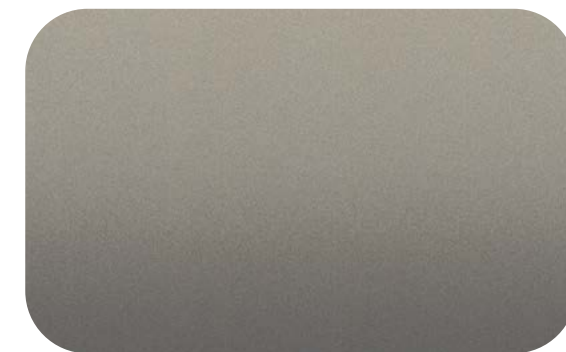
TITANIUM RUSH
METALLIC^{1, 4}



DYNAMIC BLUE
METALLIC^{1, 5}



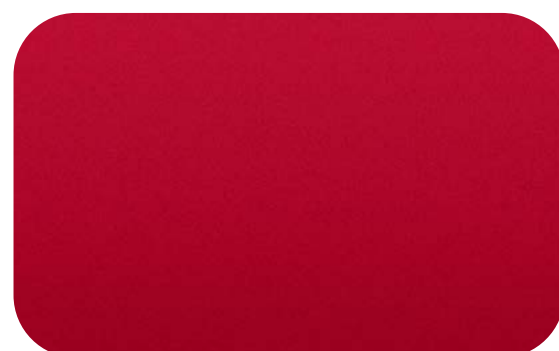
STERLING
METALLIC¹



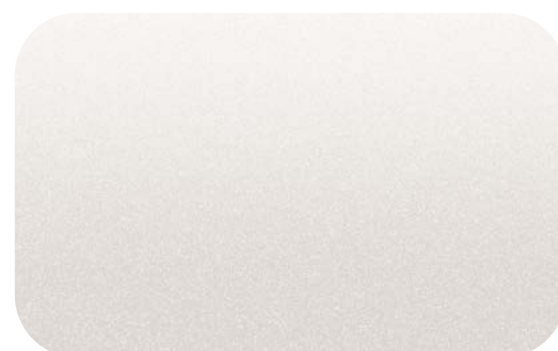
DESERT SAND
METALLIC^{1, 5}



VOLCANIC RED
TINTCOAT^{1, 6}



CARDINAL
RED^{1, 7}



WHITE FROST
TRICOAT^{1, 8}



DEEP BRONZE
METALLIC^{1, 9}

¹Extra-cost color.

²Not available on Denali Ultimate.

³Not available on Elevation, AT4 or AT4X.

⁴Not available on Pro.

⁵Not available on Pro, SLE, SLT, Denali or Denali Ultimate.

⁶Not available on Pro, SLE or Denali Ultimate.

⁷Not available on SLT, AT4, AT4X, Denali or Denali Ultimate.

⁸Not available on Pro, SLE, Elevation, AT4 or AT4X.

⁹Not available on Pro, SLE, SLT, Denali or Denali Ultimate.



See your GMC dealer or [gmc.com](https://www.gmc.com) for more exterior color details.

Denali Ultimate shown in Titanium Rush Metallic.



PRECISION-CRAFTED FROM THE GROUND UP



22"

22" High-Gloss Black With Multi-Spoke (SRV) Accessory Wheel¹
Available on SLT and Denali



22"

22" Low-Gloss Black With Machined Outer Spokes (SRL) Accessory Wheel¹
Available on SLT and Denali



22"

22" High-Gloss Black (SGM) Accessory Wheel¹
Available on SLT and Denali



22"

22" Carbon Flash Metallic (SEZ) Accessory Wheel¹
Available on SLT and Denali



22"

22" Polished Aluminum (SEU) Accessory Wheel¹
Available on SLT and Denali



22"

22" Bright Chrome Multi-Spoke (SSW) Accessory Wheel¹
Available on SLT and Denali



22"

22" Bright Chrome Split-Spoke (SSI) Accessory Wheel¹
Available on SLT and Denali



22"

22" 6-Spoke Low-Gloss Black With Machined Accents (SEV) Accessory Wheel¹
Available on SLT and Denali

¹Use only GM-approved tire and wheel combinations. See gmc.com/accessories for important tire and wheel information, or see your dealer.

